



OCEAN WHARF E14
2 bedroom apartment

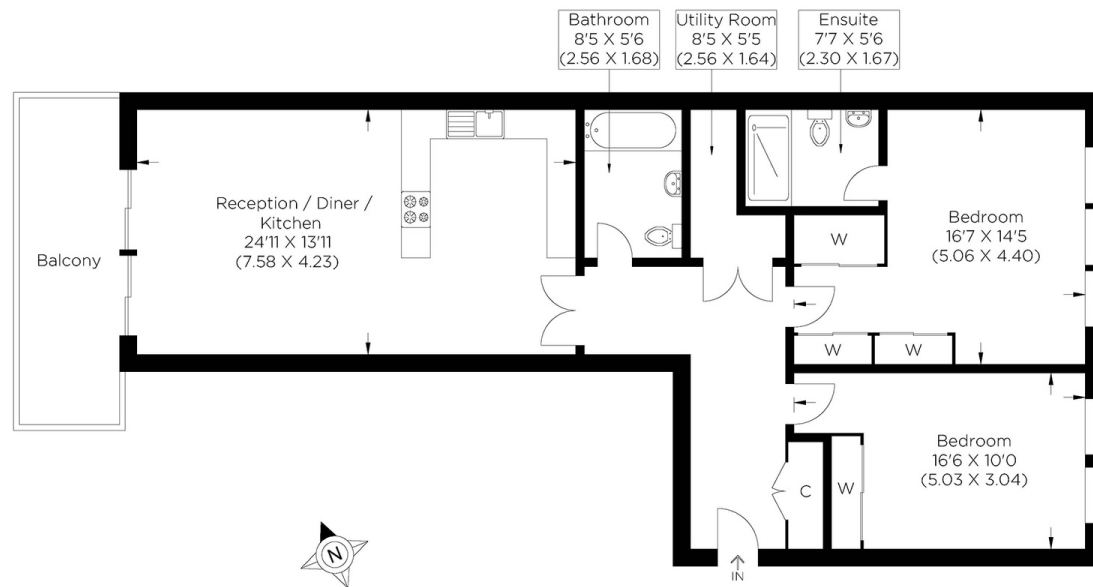
£2,500.00
LET



OCEAN WHARF E14

This beautifully presented apartment is in Ocean Wharf on Westferry Road E14, compromises of spacious kitchen/lounge diner with a larger than average balcony with west facing river views overlooking the the London skyline. There are two large bedrooms with fitted wardrobes and en-suite to master and an additional separate luxury bathroom. Apartments in this complex boast some of the largest west-facing balconies in all of Canary Wharf. Ocean Wharf is located within a secure gated complex within a short walk of Canary Wharf with its wealth of shops and amenities and also with the park close by. Transport links can be found at South Quay DLR station and Canary Wharf underground station.

Borough: Tower Hamlets* Council Tax: F* EPC: B Tenancy Deposit: £2,885 24+ Month AST Offered



Second Floor
Approximate gross internal area
92.20 sq m / 992.43 sq ft

t: 020 8075 9039 e: lettings@alexneil.com

Disclaimer: Property descriptions are subjective and used in good faith as an opinion rather than statements of fact. The owner provided information relating to title, tenure, service charges and ground rent information. Therefore, please make specific enquiries to ensure that our descriptions match your expectations of the property. Floor plan measurements are approximate and for illustrative purposes only. Furthermore, we have not tested any services, systems or appliances at this property. And we strongly recommend that you verify all the provided information on inspection and that your surveyor and conveyancer further confirm details. Also, market conditions and property values regularly fluctuate. And showcased sold properties demonstrate our previous successes rather than indicate live property values. *As advised by the owner. **Property sold subject to contract.



ALEX NEIL

ESTATE AGENTS SINCE 1984