



PRINCES COURT SE16  
**2 bedroom duplex apartment**

**£2,000.00**  
LET

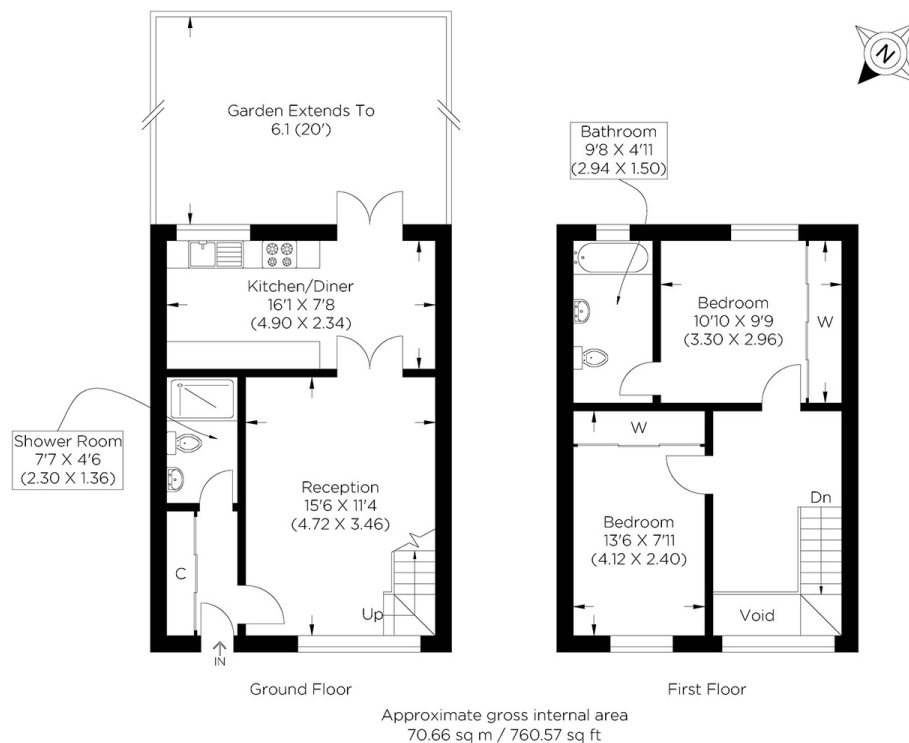




# PRINCES COURT SE16

A well-presented two bedroom split level apartment, set in a prestigious Riverside development, Princes Court Rotherhithe SE16. Princes Court boasts an abundance of space and light throughout. Comprising a large reception room, fitted kitchen with a dining area, two double bedrooms, wet room, and a mezzanine. Furthering built in wardrobes, en-suite, floor to ceiling windows, a private garden and underground parking.

Borough: Southwark\* Council Tax: E\* EPC: TBA Tenancy Deposit: £2,308 24+ Month AST Offered



t: 020 8075 9039 e: [lettings@alexneil.com](mailto:lettings@alexneil.com)

Disclaimer: Property descriptions are subjective and used in good faith as an opinion rather than statements of fact. The owner provided information relating to title, tenure, service charges and ground rent information. Therefore, please make specific enquiries to ensure that our descriptions match your expectations of the property. Floor plan measurements are approximate and for illustrative purposes only. Furthermore, we have not tested any services, systems or appliances at this property. And we strongly recommend that you verify all the provided information on inspection and that your surveyor and conveyancer further confirm details. Also, market conditions and property values regularly fluctuate. And showcased sold properties demonstrate our previous successes rather than indicate live property values. \*As advised by the owner. \*\*Property sold subject to contract.

## ALEX NEIL

ESTATE AGENTS SINCE 1984