



ST. DAVIDS SQUARE E14  
**2 bedroom apartment**

**£1,900.00**  
LET

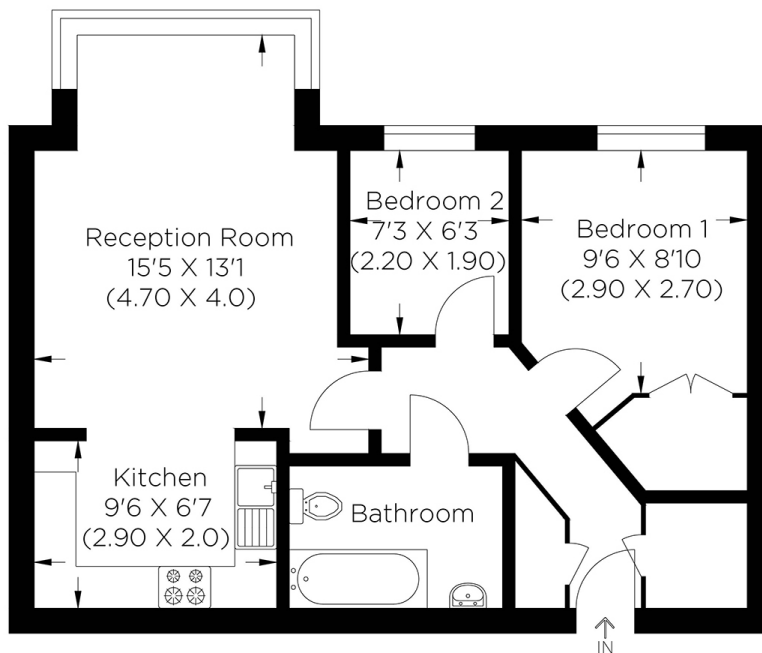




# ST. DAVIDS SQUARE E14

A beautifully presented two bedroom apartment within the prestigious St David's Square Riverside Development E14. This fantastic property comprises a modern living space, fully fitted kitchen with integrated appliances, a double bedroom, additional single bedroom which can be perfectly used as home office; and a modern family bathroom. Benefiting from an allocated parking space, ample storage and on-site facilities including residents' gym, pool, sauna and 24 hour concierge. St David's Square is positioned close to local shops and amenities on Westferry Road, as well as Canary Wharf, the River Thames and the Greenwich foot tunnel. The development is perfectly located for Millwall Park & Island Gardens DLR station offering great transport links to the City and the West End. Viewing Highly Recommended.

Borough: Tower Hamlets\* Council Tax: D\* EPC: D Tenancy Deposit: £2,193 24+ Month AST Offered



Second Floor

Approximate gross internal area  
44.0 sq m / 474.0 sq ft



t: 020 8075 9039 e: [lettings@alexneil.com](mailto:lettings@alexneil.com)

Disclaimer: Property descriptions are subjective and used in good faith as an opinion rather than statements of fact. The owner provided information relating to title, tenure, service charges and ground rent information. Therefore, please make specific enquiries to ensure that our descriptions match your expectations of the property. Floor plan measurements are approximate and for illustrative purposes only. Furthermore, we have not tested any services, systems or appliances at this property. And we strongly recommend that you verify all the provided information on inspection and that your surveyor and conveyancer further confirm details. Also, market conditions and property values regularly fluctuate. And showcased sold properties demonstrate our previous successes rather than indicate live property values. \*As advised by the owner. \*\*Property sold subject to contract.

## ALEX NEIL

ESTATE AGENTS SINCE 1984