



LANGBOURNE PLACE E14
2 bedroom apartment

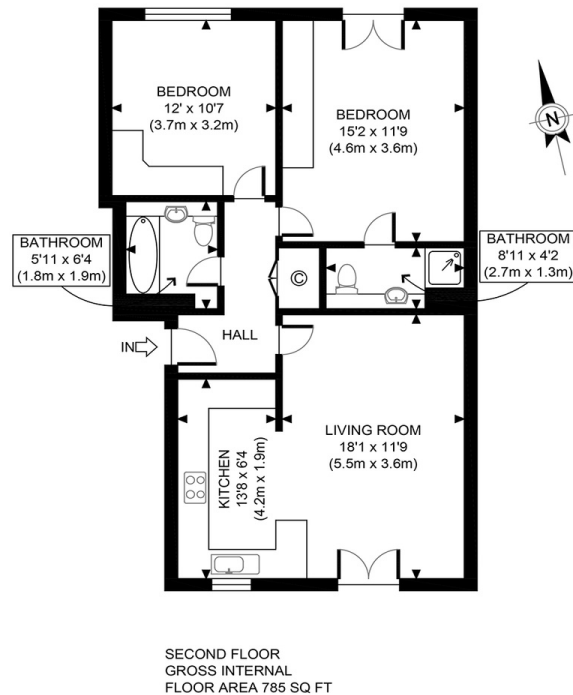
£1,650.00
LET



LANGBOURNE PLACE E14

Set on the second floor of this gated, riverside development is this spacious and well presented two bedroom apartment situated in Langbourne Place, Isle Of Dogs, E14. The accommodation comprises a large reception room with a stylish open-plan kitchen, two generous double bedrooms; en-suite to the master and a modern family bathroom. Langbourne place is perfectly positioned for the local shops and amenities on Westferry Road whilst the frequent bus service offers swift access to the vibrant bars and restaurants that Canary Wharf affords. The Thames Clipper River Bus Service and Mudchute and Island Gardens DLR provide excellent travel connections. The wonderful location also allows for serene river walks where you can take time to stop with a coffee and take in the tranquillity. Your earliest internal inspection is recommended.

Borough: Tower Hamlets* Council Tax: D* EPC: D Tenancy Deposit: £1,904 24+ Month AST Offered
Nearest Station: Island Gardens (0.29 miles) Material Information: www.alexneil.com/material-information



APPROX. GROSS INTERNAL FLOOR AREA 785 SQ FT / 73 SQM

t: 020 8075 9039 e: lettings@alexneil.com

Disclaimer: Property descriptions are subjective and used in good faith as an opinion rather than statements of fact. The owner provided information relating to title, tenure, service charges and ground rent information. Therefore, please make specific enquiries to ensure that our descriptions match your expectations of the property. Floor plan measurements are approximate and for illustrative purposes only. Furthermore, we have not tested any services, systems or appliances at this property. And we strongly recommend that you verify all the provided information on inspection and that your surveyor and conveyancer further confirm details. Also, market conditions and property values regularly fluctuate. And showcased sold properties demonstrate our previous successes rather than indicate live property values. *As advised by the owner. **Property sold subject to contract.



ALEX NEIL

ESTATE AGENTS SINCE 1984