



HASLERS WHARF E3
2 bedroom apartment

£2,700.00
LET

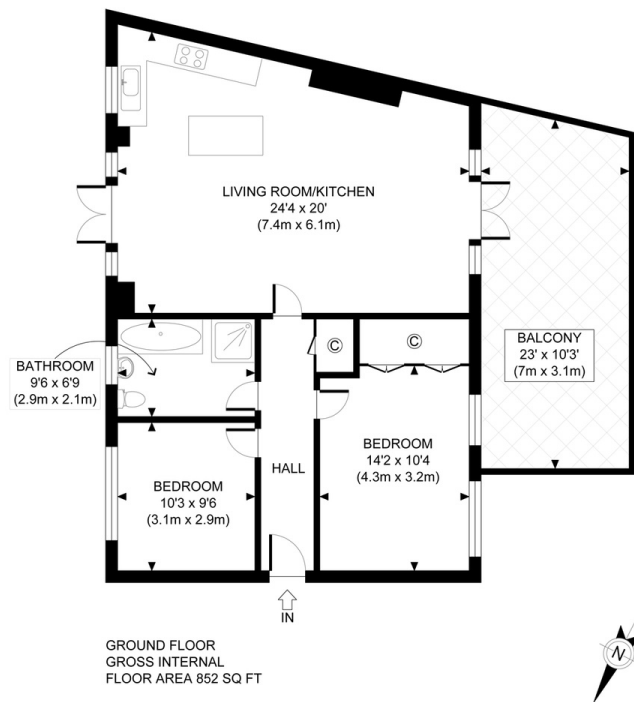


HASLERS WHARF E3

Sitting on the banks of the Hertford Union Canal, Old Ford Road, E3, this stunning two double bedroom property offers spacious open plan living and a large private terrace with magnificent views overlooking Victoria Park. Other features include secure off-street parking, fitted wardrobes in the master bedroom, dual aspect reception with underfloor heating, a recently updated modern bathroom with shower and stand-alone bathtub, this apartment is not to be missed! Located in the Victoria Park Conservation Area the beautiful green spaces of Victoria Park contain London's widest variety of trees and is the UK's only park to win the Green Flag Award 3 times. The park itself is one of London's largest and most historic parks (known as The Peoples Park) offering beautiful walks, a range of cafes and eateries, sponsored activities, festivals and events including a weekly farmers market every Sunday for fantastic fresh and seasonal produce.

Borough: Tower Hamlets* Council Tax: E* EPC: D Tenancy Deposit: £3,116 24+ Month AST Offered

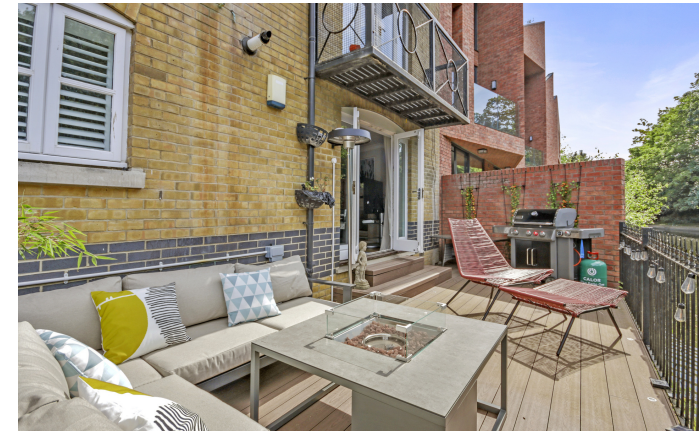
Nearest Station: Mile End (0.65 miles) Material Information: www.alexneil.com/material-information



APPROX. GROSS INTERNAL FLOOR AREA 852 SQ FT / 79 SQM

t: 020 8075 9039 e: lettings@alexneil.com

Disclaimer: Property descriptions are subjective and used in good faith as an opinion rather than statements of fact. The owner provided information relating to title, tenure, service charges and ground rent information. Therefore, please make specific enquiries to ensure that our descriptions match your expectations of the property. Floor plan measurements are approximate and for illustrative purposes only. Furthermore, we have not tested any services, systems or appliances at this property. And we strongly recommend that you verify all the provided information on inspection and that your surveyor and conveyancer further confirm details. Also, market conditions and property values regularly fluctuate. And showcased sold properties demonstrate our previous successes rather than indicate live property values. *As advised by the owner. **Property sold subject to contract.



ALEX NEIL

ESTATE AGENTS SINCE 1984