



GLOBE APARTMENTS SE8  
**2 bedroom apartment**

**£1,400.00**  
LET

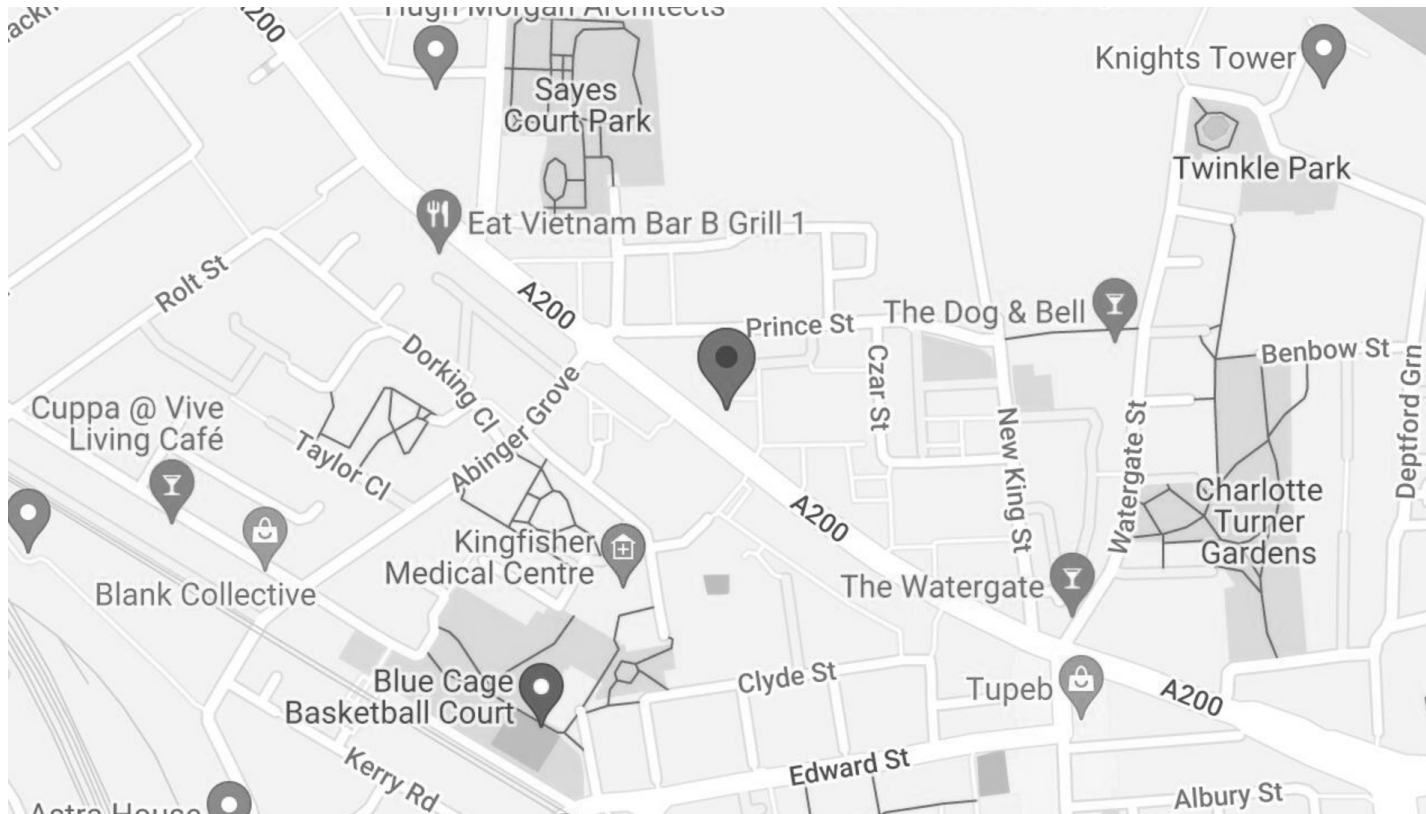




# GLOBE APARTMENTS SE8

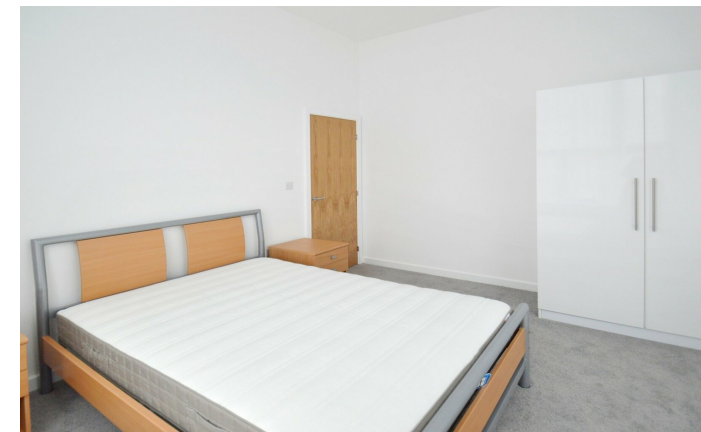
A superb two double bedroom property, set in the brand new Globe Apartments. This large property is presented in pristine condition throughout and boasts a bright and spacious open plan lounge with a glossy fitted kitchen, two bedrooms and a family bathroom. Further benefiting from secure entry and bike storage. The apartment is ideally placed for Deptford and New Cross Stations affording excellent travel connections. There are also an abundance of local amenities within easy reach, offering the utmost convenience. A fabulous apartment for professionals looking for luxury living.

Borough: Lewisham\* Council Tax: B\* EPC: B Tenancy Deposit: £1,616 24+ Month AST Offered  
Nearest Station: Deptford (0.3 miles) Material Information: [www.alexneil.com/material-information](http://www.alexneil.com/material-information)



t: 020 8075 9039 e: [lettings@alexneil.com](mailto:lettings@alexneil.com)

Disclaimer: Property descriptions are subjective and used in good faith as an opinion rather than statements of fact. The owner provided information relating to title, tenure, service charges and ground rent information. Therefore, please make specific enquiries to ensure that our descriptions match your expectations of the property. Floor plan measurements are approximate and for illustrative purposes only. Furthermore, we have not tested any services, systems or appliances at this property. And we strongly recommend that you verify all the provided information on inspection and that your surveyor and conveyancer further confirm details. Also, market conditions and property values regularly fluctuate. And showcased sold properties demonstrate our previous successes rather than indicate live property values. \*As advised by the owner. \*\*Property sold subject to contract.



## ALEX NEIL

ESTATE AGENTS SINCE 1984

2024 signifies our **40th Anniversary**, and we are immensely proud to have reached this impressive longevity milestone. In celebration, we launched an **exceptional promotion** for sellers, affording them increased marketing exposure for free!

**40 years of expertise:** With four decades of experience, we bring a wealth of knowledge and expertise. Our durability is a testament to the trust satisfied clients place in us. We understand the nuances of the diverse neighbourhoods we cover. Our local expertise allows us to provide tailored solutions, whether you're buying or selling, allowing you to move with confidence.



ALEX NEIL

ESTATE AGENTS SINCE 1984

[www.alexneil.com](http://www.alexneil.com)