



HARROLD COURT E14
2 bedroom apartment

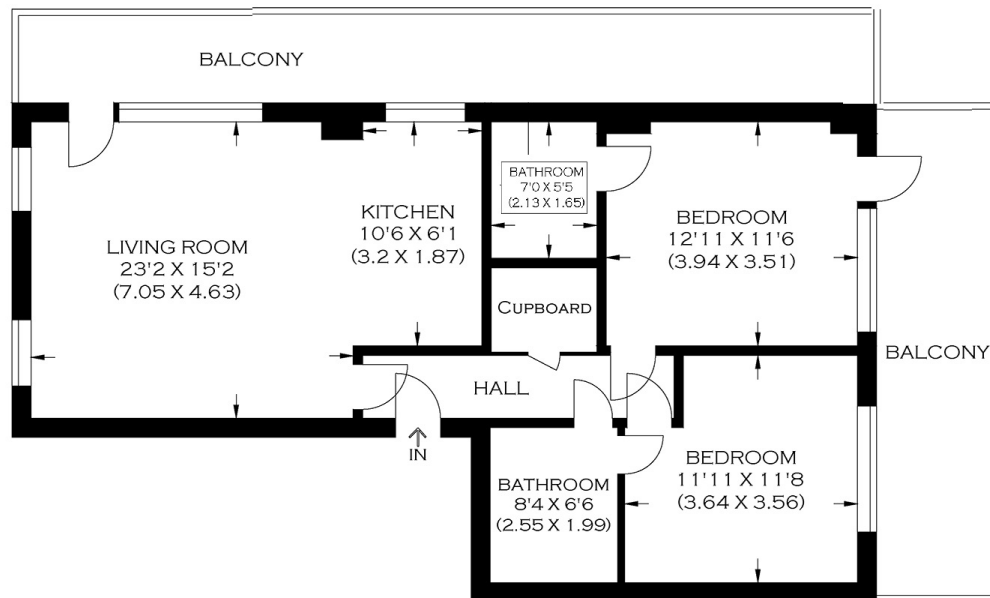
£1,750.00
LET



HARROLD COURT E14

A wonderfully presented two bedroom, two bathroom property located in a recently built canal side development. This spacious apartment boasts a contemporary open plan kitchen/reception room overlooking the Limehouse Cut Canal which leads to an expansive terrace, two double bedrooms, with an en-suite and balcony to the master and a sizable second bedroom with direct access to the family bathroom. Also benefiting from ample storage space and a secure allocated parking space. Guthridge Close enjoys great transport links to Canary Wharf and the City by way of Langdon Park DLR.

Borough: Tower Hamlets* Council Tax: D* EPC: B Tenancy Deposit: £2,020 24+ Month AST Offered
Nearest Station: Langdon Park (0.32 miles) Material Information: www.alexneil.com/material-information



APPROXIMATE GROSS INTERNAL AREA
74.62 SQ M / 803.20 SQ FT

Produced By www.myphotogenie.co.uk

t: 020 8075 9039 e: lettings@alexneil.com

Disclaimer: Property descriptions are subjective and used in good faith as an opinion rather than statements of fact. The owner provided information relating to title, tenure, service charges and ground rent information. Therefore, please make specific enquiries to ensure that our descriptions match your expectations of the property. Floor plan measurements are approximate and for illustrative purposes only. Furthermore, we have not tested any services, systems or appliances at this property. And we strongly recommend that you verify all the provided information on inspection and that your surveyor and conveyancer further confirm details. Also, market conditions and property values regularly fluctuate. And showcased sold properties demonstrate our previous successes rather than indicate live property values. *As advised by the owner. **Property sold subject to contract.



ALEX NEIL

ESTATE AGENTS SINCE 1984