



ARNHEM WHARF E14
2 bedroom apartment

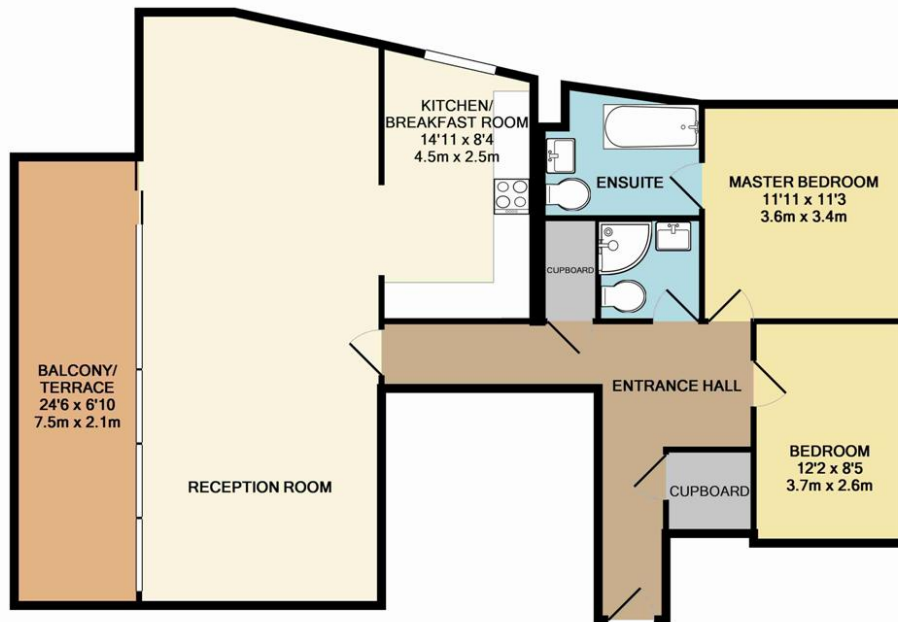
£2,200.00
LET



ARNHEM WHARF E14

Offering fantastic river views, this excellent two bedroom apartment is situated within a modern, riverside development. The property is presented in exceptional condition and comprises a generous reception room with ample space for dining and sliding doors opening to the substantial balcony, integrated kitchen, master bedroom with en-suite bathroom, second double bedroom with river views and a stylish shower room. Arnhem Wharf is ideally located for an array of transport links and within easy reach of the indulgences Canary Wharf affords.

Borough: Tower Hamlets* Council Tax: F* EPC: C Tenancy Deposit: £2,539 24+ Month AST Offered
Nearest Station: Crossharbour (0.57 miles) Material Information: www.alexneil.com/material-information

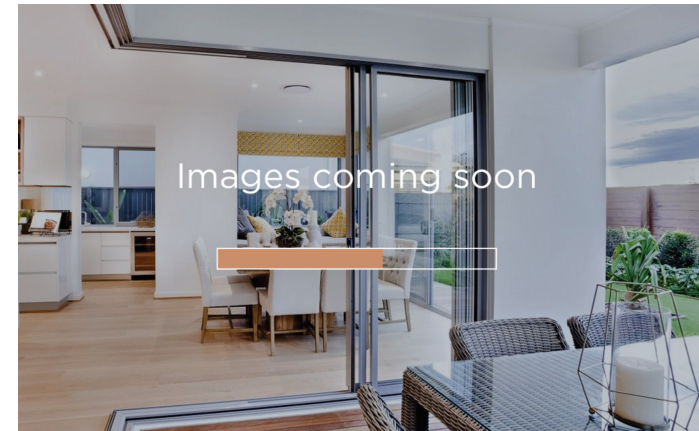


TOTAL APPROX. FLOOR AREA 1211 SQ.FT. (112.5 SQ.M.)

Whilst every attempt has been made to ensure the accuracy of the floor plan contained here, measurements of doors, windows, rooms and any other items are approximate and no responsibility is taken for any error, omission, or mis-statement. This plan is for illustrative purposes only and should be used as such by any prospective purchaser. The services, systems and appliances shown have not been tested and no guarantee as to their operability or efficiency can be given.
Made with Metropix ©2012

t: 020 8075 9039 e: lettings@alexneil.com

Disclaimer: Property descriptions are subjective and used in good faith as an opinion rather than statements of fact. The owner provided information relating to title, tenure, service charges and ground rent information. Therefore, please make specific enquiries to ensure that our descriptions match your expectations of the property. Floor plan measurements are approximate and for illustrative purposes only. Furthermore, we have not tested any services, systems or appliances at this property. And we strongly recommend that you verify all the provided information on inspection and that your surveyor and conveyancer further confirm details. Also, market conditions and property values regularly fluctuate. And showcased sold properties demonstrate our previous successes rather than indicate live property values. *As advised by the owner. **Property sold subject to contract.



ALEX NEIL

ESTATE AGENTS SINCE 1984

2024 signifies our **40th Anniversary**, and we are immensely proud to have reached this impressive longevity milestone. In celebration, we launched an **exceptional promotion** for sellers, affording them increased marketing exposure for free!

40 years of expertise: With four decades of experience, we bring a wealth of knowledge and expertise. Our durability is a testament to the trust satisfied clients place in us. We understand the nuances of the diverse neighbourhoods we cover. Our local expertise allows us to provide tailored solutions, whether you're buying or selling, allowing you to move with confidence.



ALEX NEIL

ESTATE AGENTS SINCE 1984

www.alexneil.com