



JETTY COURT E14
2 bedroom apartment

£479,995
LEASEHOLD

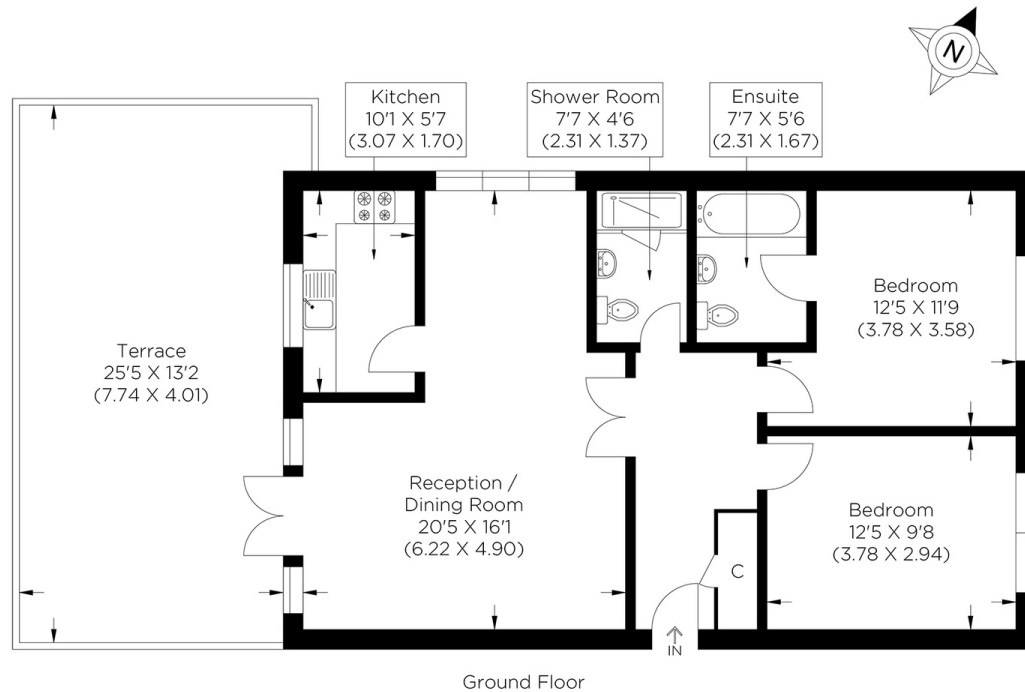


JETTY COURT E14

Positioned on the ground floor of the sought after private gated Jetty Court development E14, this beautifully presented two bedroom, two bathroom apartment offers exceptionally spacious accommodation together with the rare benefit of an extra large private garden terrace, creating an outstanding indoor-outdoor living space. Offered chain free and presented in immaculate condition throughout, the apartment features a generous reception room with ample space for both living and dining, seamlessly opening onto the expansive terrace, perfect for entertaining, al fresco dining or simply relaxing in a peaceful setting. The fitted kitchen is well appointed, while both double bedrooms are generously proportioned. The principal bedroom benefits from an en suite shower room, complemented by a family bathroom serving the remainder of the accommodation. A standout feature of this home is the impressive private garden terrace, offering significantly more outside space than is typically found in Docklands apartments. The property also benefits from an allocated parking space, adding further practicality and convenience. Jetty Court is a secure, gated development ideally located in the heart of Docklands, within easy reach of Canary Wharf and its superb array of shops, restaurants, bars and leisure facilities. Excellent transport links provide fast and convenient access to the City, West End and beyond, making this an ideal purchase for first-time buyers and investors alike.

Borough: Tower Hamlets* Council Tax: D* EPC: D Lease Term: 970 years* Service Charge: £4,000* Ground Rent: £150*

Nearest Station: Crossharbour (0.49 miles) Material Information: www.alexneil.com/material-information



Canary Wharf & Docklands Office
2 Westferry Road, Canary Wharf, London E14 8JT

t: 020 7537 9859 e: sales@alexneil.com

Disclaimer: Property descriptions are subjective and used in good faith as an opinion rather than statements of fact. The owner provided information relating to title, tenure, service charges and ground rent information. Therefore, please make specific enquiries to ensure that our descriptions match your expectations of the property. Floor plan measurements are approximate and for illustrative purposes only. Furthermore, we have not tested any services, systems or appliances at this property. And we strongly recommend that you verify all the provided information on inspection and that your surveyor and conveyancer further confirm details. Also, market conditions and property values regularly fluctuate. And showcased sold properties demonstrate our previous successes rather than indicate live property values. *As advised by the owner. **Property sold subject to contract.

ALEX NEIL

ESTATE AGENTS SINCE 1984