



JETTY COURT E14
2 bedroom apartment

£460,000
LEASEHOLD



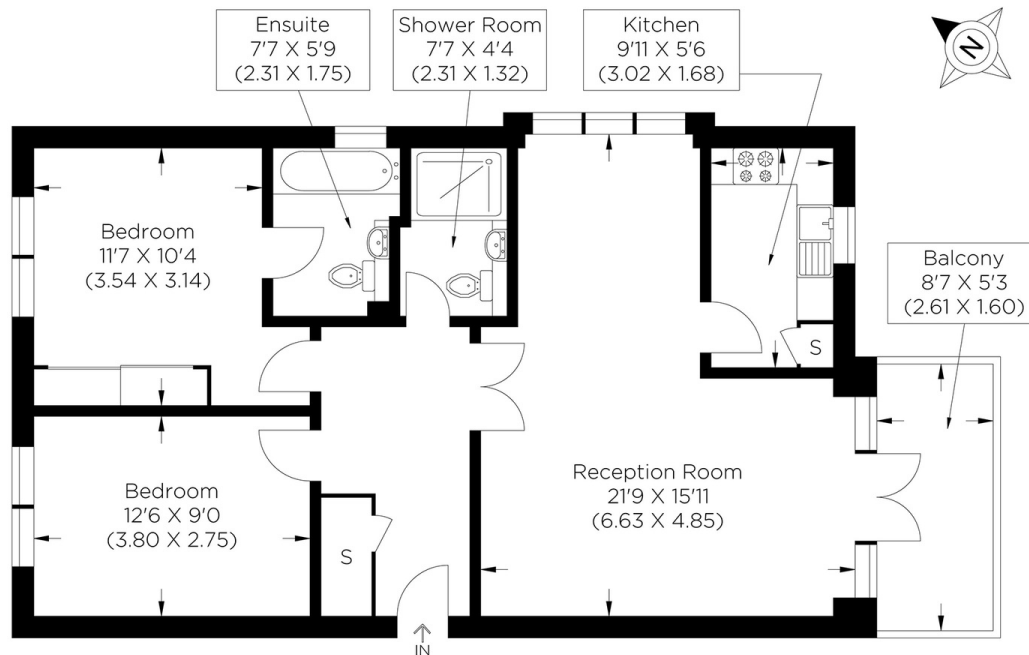
JETTY COURT E14

A superb two-bedroom, two-bathroom apartment situated within the sought-after private gated Jetty Court development in E14, ideally located in the heart of Docklands.

Presented in very good condition throughout, this spacious apartment offers well-balanced accommodation comprising a bright and airy reception room with a dedicated dining area, a modern fitted kitchen, two generously sized double bedrooms, an en-suite shower room to the principal bedroom, and a stylish family bathroom. The property further benefits from a private balcony, providing an ideal space for relaxing or entertaining whilst enjoying attractive side views towards the River Thames. The balcony also benefits from a high degree of privacy, being largely unoverlooked by neighbouring properties. In addition, the apartment benefits from an allocated parking space, a highly desirable feature in this popular Docklands location. The secure gated development is perfectly suited to owner-occupiers and investors alike, offering contemporary living in one of East London's most desirable residential locations. Residents enjoy convenient access to Canary Wharf's extensive range of shops, restaurants, bars, and leisure facilities, together with excellent transport links providing swift connections to the City, West End, and beyond.

Borough: Tower Hamlets* Council Tax: D* EPC: C Lease Term: 970 years* Service Charge: £4,825* Ground Rent: £150*

Nearest Station: Crossharbour (0.49 miles) Material Information: www.alexneil.com/material-information



Approximate gross internal area
72.26 sq m / 777.80 sq ft

Canary Wharf & Docklands Office
2 Westferry Road, Canary Wharf, London E14 8JT

t: 020 7537 9859 e: sales@alexneil.com

Disclaimer: Property descriptions are subjective and used in good faith as an opinion rather than statements of fact. The owner provided information relating to title, tenure, service charges and ground rent information. Therefore, please make specific enquiries to ensure that our descriptions match your expectations of the property. Floor plan measurements are approximate and for illustrative purposes only. Furthermore, we have not tested any services, systems or appliances at this property. And we strongly recommend that you verify all the provided information on inspection and that your surveyor and conveyancer further confirm details. Also, market conditions and property values regularly fluctuate. And showcased sold properties demonstrate our previous successes rather than indicate live property values. *As advised by the owner. **Property sold subject to contract.



ALEX NEIL

ESTATE AGENTS SINCE 1984