



WYNDHAM ROAD E6
2 bedroom terraced house

£450,000
FREEHOLD

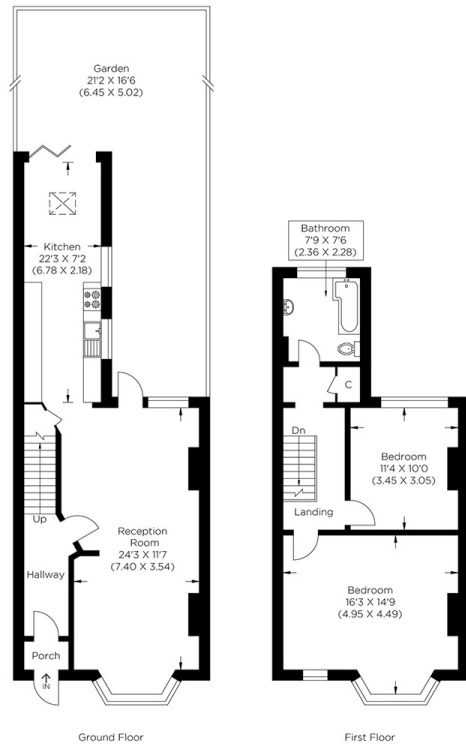


WYNDHAM ROAD E6

A fantastic opportunity to acquire a move-in-ready home in a highly sought-after and well-connected location. This attractive two-bedroom house has been fully renovated throughout to a high standard, offering stylish and contemporary living accommodation finished in neutral decor. The property benefits from a spacious extended layout, creating a bright and versatile living space ideal for modern family life. Internally comprising a large through lounge, dining area, fully fitted kitchen, study area two double bedrooms and a larger than average family bathroom. Outside, the home boasts a private, landscaped rear garden, perfect for relaxing, entertaining, or enjoying outdoor family activities. Further benefits include, ample storage space, a basement, and residents parking. Ideally positioned opposite a local school rated Outstanding by Ofsted, the property is particularly well suited to families. It is also conveniently located close to a range of local amenities, including shops, supermarkets, cafes, and leisure facilities. Excellent transport links provide easy access to surrounding areas and Central London, making this an ideal choice for commuters.

Borough: Newham* Council Tax: C* EPC: D

Nearest Station: Upton Park (0.27 miles) Material Information: www.alexneil.com/material-information



Canary Wharf & Docklands Office
2 Westferry Road, Canary Wharf, London E14 8JT

t: 020 7537 9859 e: sales@alexneil.com

Disclaimer: Property descriptions are subjective and used in good faith as an opinion rather than statements of fact. The owner provided information relating to title, tenure, service charges and ground rent information. Therefore, please make specific enquiries to ensure that our descriptions match your expectations of the property. Floor plan measurements are approximate and for illustrative purposes only. Furthermore, we have not tested any services, systems or appliances at this property. And we strongly recommend that you verify all the provided information on inspection and that your surveyor and conveyancer further confirm details. Also, market conditions and property values regularly fluctuate. And showcased sold properties demonstrate our previous successes rather than indicate live property values. *As advised by the owner. **Property sold subject to contract.

ALEX NEIL

ESTATE AGENTS SINCE 1984