



ST. DAVIDS SQUARE E14  
**2 bedroom apartment**

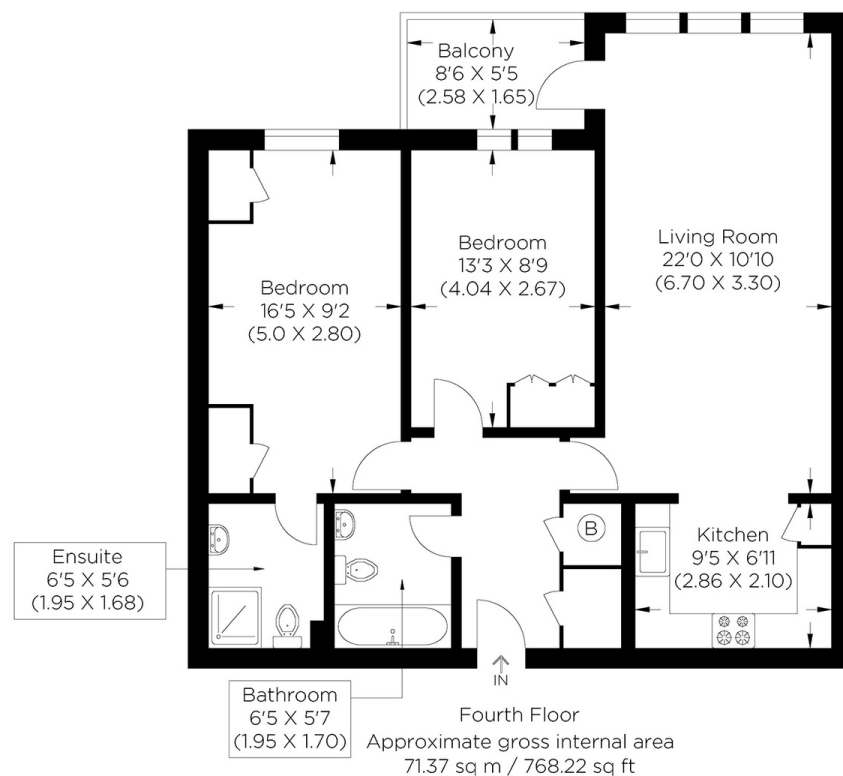
**£450,000+**  
LEASEHOLD



# ST. DAVIDS SQUARE E14

Offered to the market priced to sell, is this stunning two bedroom, two bathroom apartment within the highly sought after St. David's Square, Isle of Dogs Landmark Development. This property offers a luxurious lifestyle, boasting a twenty four hour concierge service, residents only leisure facilities including a fully equipped gymnasium, swimming pool, sauna and snooker room. The apartment is in excellent condition and spans over 760 square feet and is offered with a secure allocated parking space. The accommodation comprises two spacious double bedrooms, master with en-suite, semi open plan fully fitted kitchen, reception room with balcony (both offering stunning views of the River Thames), and a spacious family bathroom. St. David's Square is ideal for easy access to Island Gardens Park, DLR station and Greenwich foot tunnel. Canary Wharf and the City are easily accessible from this prime riverside location.

Borough: Tower Hamlets\* Council Tax: E\* EPC: C Lease Term: 976 years\* Service Charge: £4,000\* Ground Rent: £100\*  
Nearest Station: Island Gardens (0.23 miles) Material Information: [www.alexneil.com/material-information](http://www.alexneil.com/material-information)



**Canary Wharf & Docklands Office**  
2 Westferry Road, Canary Wharf, London E14 8JT

t: 020 7537 9859 e: [sales@alexneil.com](mailto:sales@alexneil.com)

Disclaimer: Property descriptions are subjective and used in good faith as an opinion rather than statements of fact. The owner provided information relating to title, tenure, service charges and ground rent information. Therefore, please make specific enquiries to ensure that our descriptions match your expectations of the property. Floor plan measurements are approximate and for illustrative purposes only. Furthermore, we have not tested any services, systems or appliances at this property. And we strongly recommend that you verify all the provided information on inspection and that your surveyor and conveyancer further confirm details. Also, market conditions and property values regularly fluctuate. And showcased sold properties demonstrate our previous successes rather than indicate live property values. \*As advised by the owner. \*\*Property sold subject to contract.

# ALEX NEIL

ESTATE AGENTS SINCE 1984