



MERCATOR PLACE E14
4 bedroom terraced house

£850,000
LEASEHOLD

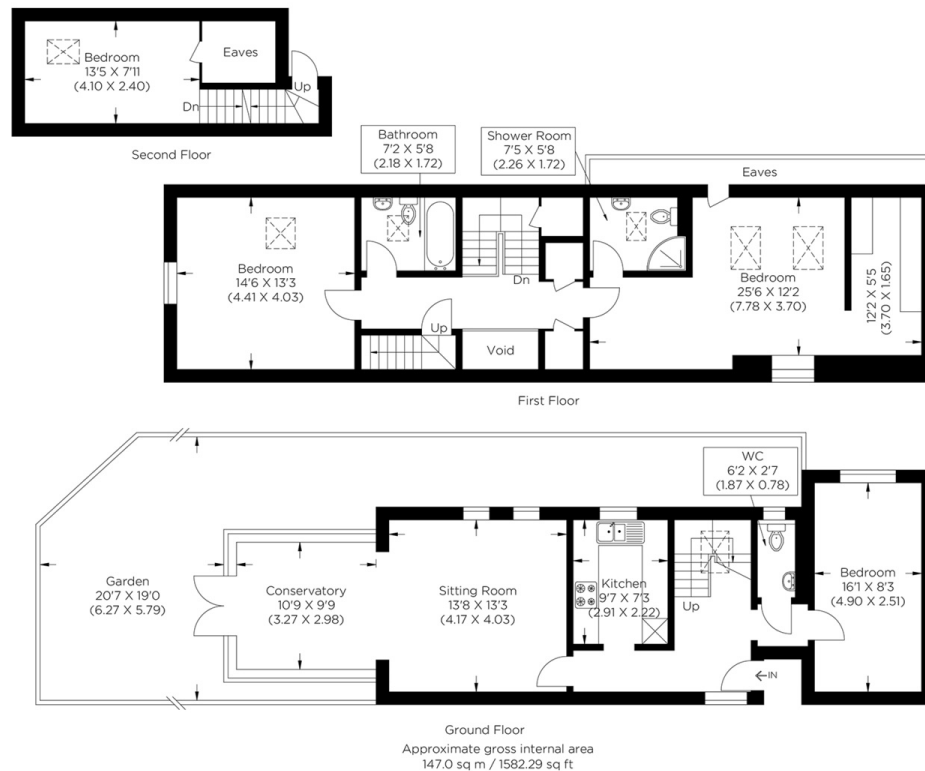


MERCATOR PLACE E14

Offered to the market chain-free is this spacious, four bedroom, two bathroom corner House, set within a private gated development at Mercator Place, E14. Its position creates a bright, private setting with excellent natural light and a strong sense of space throughout. set on the River Thames the home offers a practical and well-designed layout for modern living, with a comfortable reception space, a well equipped fitted kitchen, separate wc, four generous bedrooms, including a principal bedroom with a walk in wardrobe, en-suite, and a contemporary family bathroom. The house has already been extended and offers a bright conservatory that leads to a private low maintenance garden. Ideally positioned for both families and professionals, the property provides easy access to Canary Wharf and a wide range of local shops, dining, and transport connections. A rare opportunity to secure a chain-free house in a secure gated setting in one of E14s most desirable residential locations.

Borough: Tower Hamlets* Council Tax: E* EPC: C Lease Term: 970 years* Service Charge: £1,800* Ground Rent: TBA

Nearest Station: Mudchute (0.32 miles) Material Information: www.alexneil.com/material-information



Canary Wharf & Docklands Office
2 Westferry Road, Canary Wharf, London E14 8JT

t: 020 7537 9859 e: sales@alexneil.com

Disclaimer: Property descriptions are subjective and used in good faith as an opinion rather than statements of fact. The owner provided information relating to title, tenure, service charges and ground rent information. Therefore, please make specific enquiries to ensure that our descriptions match your expectations of the property. Floor plan measurements are approximate and for illustrative purposes only. Furthermore, we have not tested any services, systems or appliances at this property. And we strongly recommend that you verify all the provided information on inspection and that your surveyor and conveyancer further confirm details. Also, market conditions and property values regularly fluctuate. And showcased sold properties demonstrate our previous successes rather than indicate live property values. *As advised by the owner. **Property sold subject to contract.

ALEX NEIL

ESTATE AGENTS SINCE 1984