



DA GAMA PLACE E14
3 bedroom terraced house

£875,000
FREEHOLD

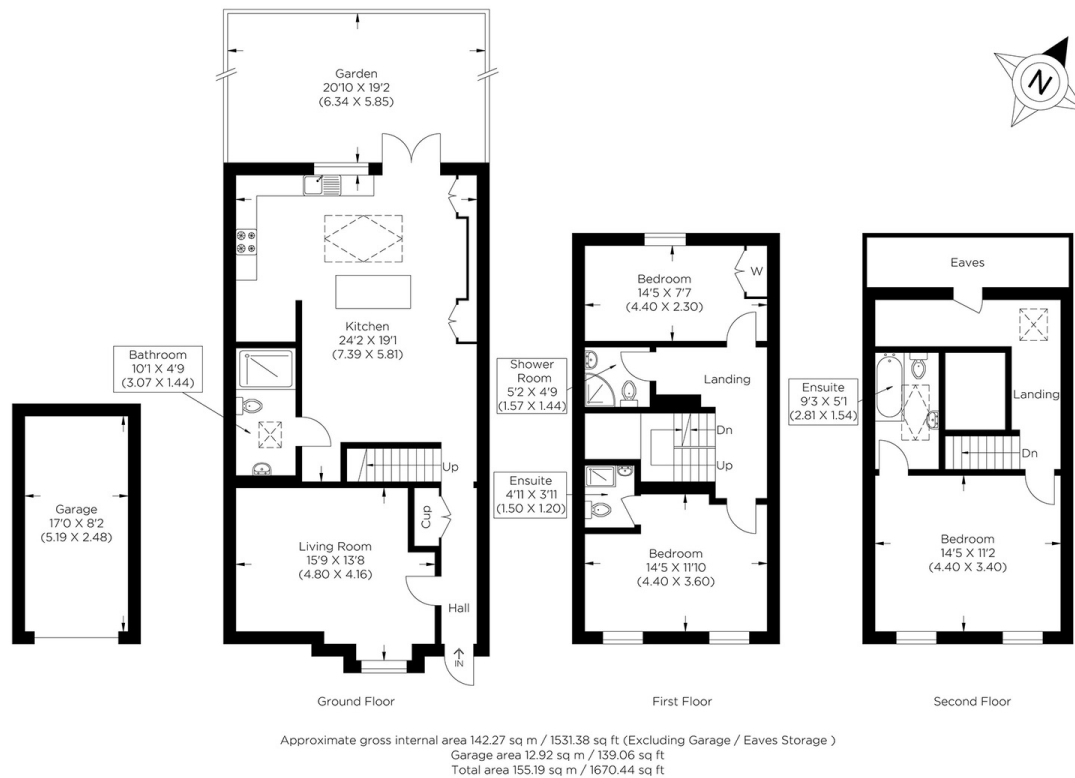


DA GAMA PLACE E14

A fully extended three-bedroom house situated within Da Gama Place, which forms part of the prestigious Maritime Quay Development in E14, this is a fully gated riverside development bordering the River Thames. Attention to detail has been paid throughout this wonderful family home. The ground floor comprises a large lounge, a spacious family bathroom, a separate fully fitted kitchen and dining area allowing for direct access to a well maintained garden, ideal for a growing family. On the first floor, there are two generous bedrooms, each with its own ensuite, while the top floor houses the standalone master bedroom with a further ensuite, providing privacy and luxury. The home benefits from bespoke fitted storage throughout, and a garage making it a perfect forever home. The location is extremely convenient, just a short walk to Island Gardens DLR, with Canary Wharf, Greenwich, and the City all easily accessible. Offered chain free.

Borough: Tower Hamlets* Council Tax: E* EPC: C

Nearest Station: Mudchute (0.34 miles) Material Information: www.alexneil.com/material-information



Canary Wharf & Docklands Office
2 Westferry Road, Canary Wharf, London E14 8JT

Disclaimer: Property descriptions are subjective and used in good faith as an opinion rather than statements of fact. The owner provided information relating to title, tenure, service charges and ground rent information. Therefore, please make specific enquiries to ensure that our descriptions match your expectations of the property. Floor plan measurements are approximate and for illustrative purposes only. Furthermore, we have not tested any services, systems or appliances at this property. And we strongly recommend that you verify all the provided information on inspection and that your surveyor and conveyancer further confirm details. Also, market conditions and property values regularly fluctuate. And showcased sold properties demonstrate our previous successes rather than indicate live property values. *As advised by the owner. **Property sold subject to contract.

t: 020 7537 9859 e: sales@alexneil.com

ALEX NEIL

ESTATE AGENTS SINCE 1984