



CAHIR STREET E14
2 bedroom terraced house

£575,000
FREEHOLD

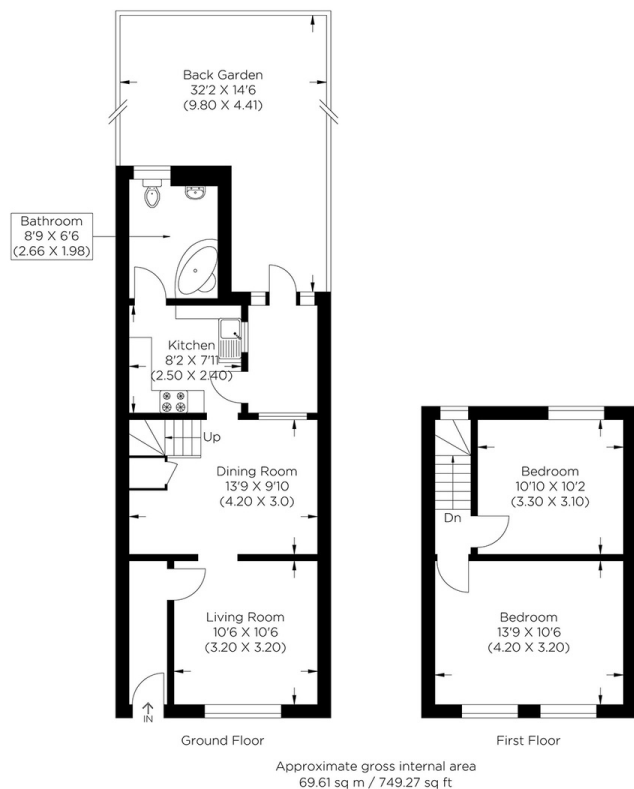


CAHIR STREET E14

We are delighted to present an exceptional opportunity to acquire a period, freehold House on Cahir Street, Canary Wharf E14, located on a quiet, low-traffic residential road and ideally positioned for easy access to Canary Wharfs business, retail, and leisure amenities. This charming chain free period home offers generous room proportions and excellent natural light throughout, comprising two well-proportioned bedrooms, a modern bathroom, a spacious open-plan kitchen/dining area, a separate living room, a utility room and a private garden. Cahir Street is superbly located close to the open green spaces of Mudchute Park, with excellent transport links via nearby DLR stations and bus routes, providing fast and convenient access to Greenwich, City of London, and Canary Wharf. This property represents an ideal purchase for professionals, couples, or families seeking a well-located home in a highly desirable area. Early viewing is highly recommended.

Borough: Tower Hamlets* Council Tax: D* EPC: D

Nearest Station: Mudchute (0.19 miles) Material Information: www.alexneil.com/material-information



Canary Wharf & Docklands Office
2 Westferry Road, Canary Wharf, London E14 8JT

t: 020 7537 9859 e: sales@alexneil.com

Disclaimer: Property descriptions are subjective and used in good faith as an opinion rather than statements of fact. The owner provided information relating to title, tenure, service charges and ground rent information. Therefore, please make specific enquiries to ensure that our descriptions match your expectations of the property. Floor plan measurements are approximate and for illustrative purposes only. Furthermore, we have not tested any services, systems or appliances at this property. And we strongly recommend that you verify all the provided information on inspection and that your surveyor and conveyancer further confirm details. Also, market conditions and property values regularly fluctuate. And showcased sold properties demonstrate our previous successes rather than indicate live property values. *As advised by the owner. **Property sold subject to contract.

ALEX NEIL

ESTATE AGENTS SINCE 1984