



SLIPWAY HOUSE E14
1 bedroom apartment

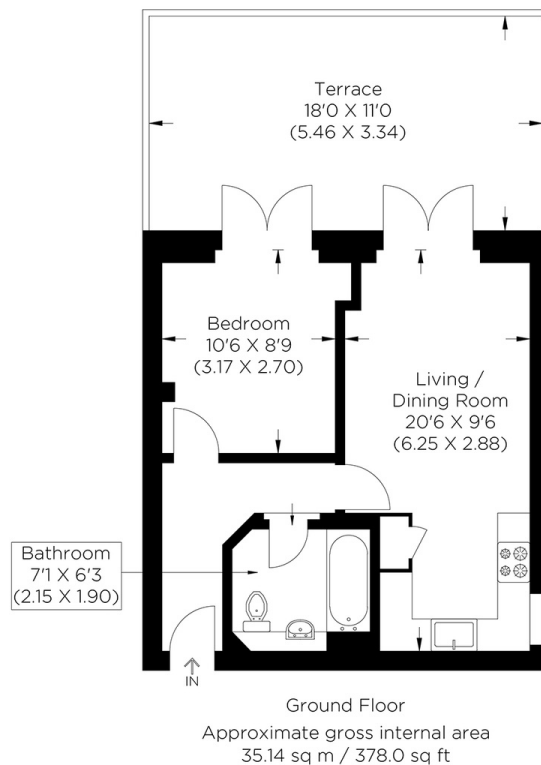
£290,000
LEASEHOLD



SLIPWAY HOUSE E14

We are pleased to present this unique Grade 2 listed ground floor well presented apartment, located within the much sought-after Burrells Wharf Development. Accessed via the original warehouse communal area, the apartment comprises an entrance hall, lounge opening to external patio area overlooking the historic slipway of the SS Great Eastern, open plan fitted modern kitchen, double bedroom and a contemporary bathroom. The prestigious Burrells Wharf development offers an array of residents facilities including gymnasium, swimming pool and a 24hr concierge service. Located within close proximity to the Masthouse Terrace Pier and 1/4 mile of Mudchute DLR Station. An early viewing is strongly advised.

Borough: Tower Hamlets* Council Tax: C* EPC: C Lease Term: 89 years* Service Charge: £3,498* Ground Rent: £50*
Nearest Station: Mudchute (0.33 miles) Material Information: www.alexneil.com/material-information



Canary Wharf & Docklands Office
2 Westferry Road, Canary Wharf, London E14 8JT

t: 020 7537 9859 e: sales@alexneil.com

Disclaimer: Property descriptions are subjective and used in good faith as an opinion rather than statements of fact. The owner provided information relating to title, tenure, service charges and ground rent information. Therefore, please make specific enquiries to ensure that our descriptions match your expectations of the property. Floor plan measurements are approximate and for illustrative purposes only. Furthermore, we have not tested any services, systems or appliances at this property. And we strongly recommend that you verify all the provided information on inspection and that your surveyor and conveyancer further confirm details. Also, market conditions and property values regularly fluctuate. And showcased sold properties demonstrate our previous successes rather than indicate live property values. *As advised by the owner. **Property sold subject to contract.

ALEX NEIL

ESTATE AGENTS SINCE 1984