



ELEANOR CLOSE SE16
3 bedroom terraced house

£900,000
FREEHOLD

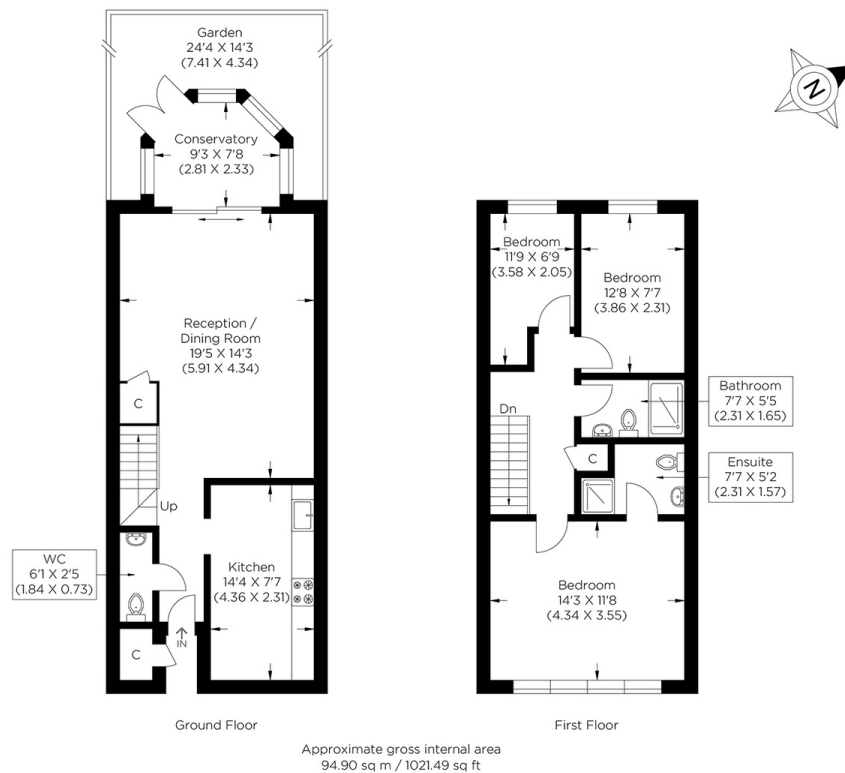


ELEANOR CLOSE SE16

An exceptionally well-presented family home located within the highly sought-after gated development of Hithe Point on Eleanor Close, SE16. This attractive and generously proportioned property offers three well-sized bedrooms, two bathrooms, a separate WC, and a bright, spacious reception room flooded with natural light. The home further benefits from a large, fully fitted kitchen providing ample storage and worktop space. To the rear, a conservatory seamlessly extends the living accommodation and opens onto a private, low-maintenance garden. Additional advantages include a driveway, offering convenient off-street parking. Eleanor Close is a well-maintained gated development, enjoying a peaceful canal-side setting while remaining superbly connected. Just moments from Canada Water Tube Station, Surrey Quays Overground, and the excellent shopping, dining and leisure facilities of Surrey Quays Shopping Centre. Ideally positioned for transport links, green spaces and local amenities.

Borough: Southwark* Council Tax: F* EPC: D

Nearest Station: Rotherhithe (0.2 miles) Material Information: www.alexneil.com/material-information



Canary Wharf & Docklands Office

2 Westferry Road, Canary Wharf, London E14 8JT

Disclaimer: Property descriptions are subjective and used in good faith as an opinion rather than statements of fact. The owner provided information relating to title, tenure, service charges and ground rent information. Therefore, please make specific enquiries to ensure that our descriptions match your expectations of the property. Floor plan measurements are approximate and for illustrative purposes only. Furthermore, we have not tested any services, systems or appliances at this property. And we strongly recommend that you verify all the provided information on inspection and that your surveyor and conveyancer further confirm details. Also, market conditions and property values regularly fluctuate. And showcased sold properties demonstrate our previous successes rather than indicate live property values. *As advised by the owner. **Property sold subject to contract.

t: 020 7537 9859 e: sales@alexneil.com

ALEX NEIL

ESTATE AGENTS SINCE 1984