



TELEGRAPH PLACE E14
1 bedroom apartment

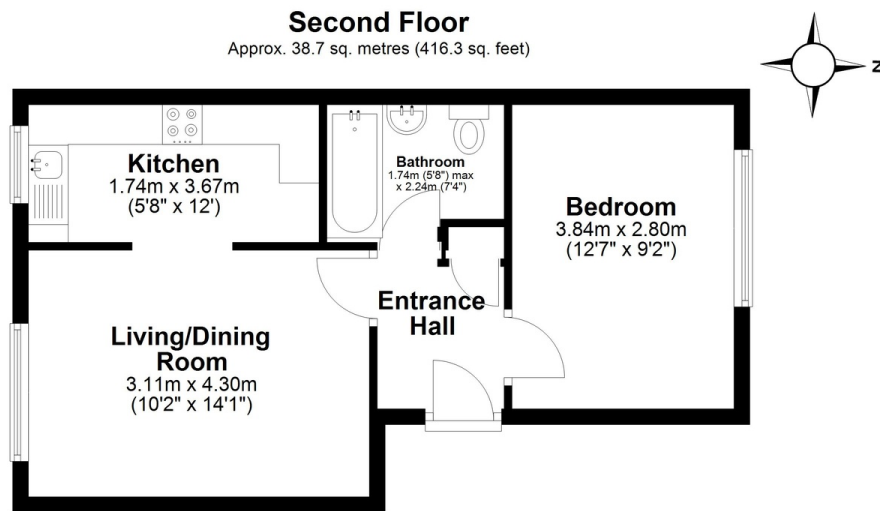
£315,000
LEASEHOLD



TELEGRAPH PLACE E14

Set on the Top floor offering Canary Wharf skyline views, is this well presented one bedroom apartment. The accommodation comprises, entrance hall, a well appointed lounge leading to a separate modern kitchen, a master bedroom and a stylish bathroom suite. Situated within the popular Mill Quay Development, affording easy access to the Millwall Dock, a perfect setting for a relaxing stroll or a scenic run. Telegraph Place is also conveniently located for Mudchute DLR Station with links to Canary Wharf and the City. Benefiting from modern decor throughout, storage space and off street parking, this is not to be missed.

Borough: Tower Hamlets* Council Tax: C* EPC: C Lease Term: 170 years* Service Charge: £1,652* Ground Rent: £220*
Nearest Station: Mudchute (0.16 miles) Material Information: www.alexneil.com/material-information



Total area: approx. 38.7 sq. metres (416.3 sq. feet)

All measurements have been taken as a guide to prospective buyers only and are not precise. This plan is for illustrative purposes only and no responsibility for any error, omission or misstatement. The services, systems and appliances shown have not been tested and no guarantee as to their operability or efficiency can be given. Measurements may have been taken from the widest area and may include wardrobe/cupboard space. No guarantee is given to any measurements including total areas. Buyers are advised to take their own measurements.

Floor Plan Drawn According To RICS Guidelines

© @modephotouk | www.modephoto.co.uk
Plan produced using PlanUp.□

Canary Wharf & Docklands Office
2 Westferry Road, Canary Wharf, London E14 8JT

Disclaimer: Property descriptions are subjective and used in good faith as an opinion rather than statements of fact. The owner provided information relating to title, tenure, service charges and ground rent information. Therefore, please make specific enquiries to ensure that our descriptions match your expectations of the property. Floor plan measurements are approximate and for illustrative purposes only. Furthermore, we have not tested any services, systems or appliances at this property. And we strongly recommend that you verify all the provided information on inspection and that your surveyor and conveyancer further confirm details. Also, market conditions and property values regularly fluctuate. And showcased sold properties demonstrate our previous successes rather than indicate live property values. *As advised by the owner. **Property sold subject to contract.

t: 020 7537 9859 e: sales@alexneil.com



ALEX NEIL

ESTATE AGENTS SINCE 1984