



ST. DAVIDS SQUARE E14
1 bedroom apartment

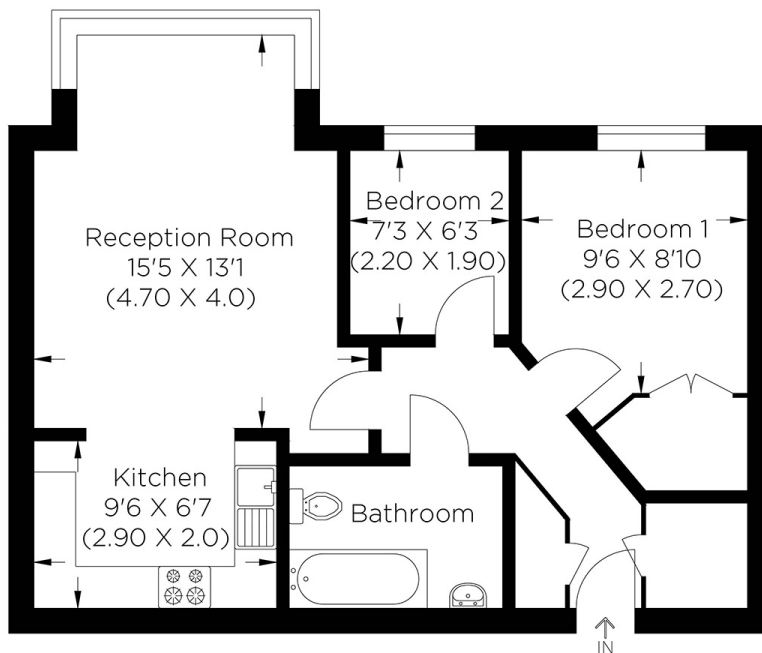
£345,000
LEASEHOLD



ST. DAVIDS SQUARE E14

A delightfully presented one bedroom apartment within the prestigious St David's Square, a very desirable London Docklands riverside development. This fantastic property comprises a modern living space, fully fitted kitchen with integrated appliances, a double master bedroom, additional room which can be perfectly used as home office or dressing room and a modern three piece bathroom. Benefiting from an allocated parking space, ample storage and on-site facilities including residents' gym, pool, sauna, snooker room and 24 hour concierge. St David's Square is positioned close to local shops and amenities on Westferry Road, as well as Canary Wharf, the River Thames and the Greenwich foot tunnel. The development is perfectly located for Mudchute & Island Gardens DLR station offering great transport links to the Canary wharf business complex, the City and the West End.

Borough: Tower Hamlets* Council Tax: D* EPC: TBA Lease Term: 970 years* Service Charge: £3,500* Ground Rent: £150*
Nearest Station: Island Gardens (0.26 miles) Material Information: www.alexneil.com/material-information



Second Floor

Approximate gross internal area
44.0 sq m / 474.0 sq ft

Canary Wharf & Docklands Office
2 Westferry Road, Canary Wharf, London E14 8JT

t: 020 7537 9859 e: sales@alexneil.com

Disclaimer: Property descriptions are subjective and used in good faith as an opinion rather than statements of fact. The owner provided information relating to title, tenure, service charges and ground rent information. Therefore, please make specific enquiries to ensure that our descriptions match your expectations of the property. Floor plan measurements are approximate and for illustrative purposes only. Furthermore, we have not tested any services, systems or appliances at this property. And we strongly recommend that you verify all the provided information on inspection and that your surveyor and conveyancer further confirm details. Also, market conditions and property values regularly fluctuate. And showcased sold properties demonstrate our previous successes rather than indicate live property values. *As advised by the owner. **Property sold subject to contract.



ALEX NEIL

ESTATE AGENTS SINCE 1984