



ST. DAVIDS SQUARE E14
2 bedroom apartment

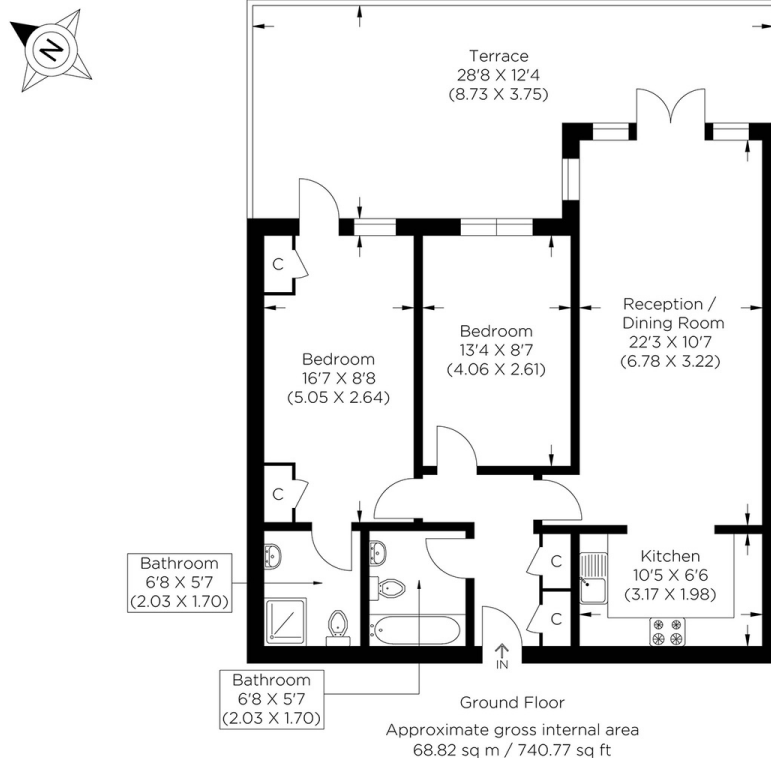
£480,000
LEASEHOLD



ST. DAVIDS SQUARE E14

Situated within the highly sought-after St Davids Square development, E14, is this well-presented two-bedroom apartment. Offered chain-free, it provides contemporary Riverside living with a generous private terrace featuring dual room access, perfect for entertaining, relaxing, or al fresco dining. Internally, the property comprises a very large lounge, two spacious bedrooms, a fitted kitchen, a family bathroom, and an en suite. Residents of St Davids Square enjoy a premium selection of on-site facilities, including a 24 hour concierge, swimming pool, gym, jacuzzi, and communal gardens, along with secure parking (subject to availability). Positioned moments from the Thames Path and within easy reach of the DLR and Canary Wharf, the location offers excellent connectivity and lifestyle convenience.

Borough: Tower Hamlets* Council Tax: E* EPC: C Lease Term: 976 years* Service Charge: £4,344* Ground Rent: £350*
Nearest Station: Island Gardens (0.23 miles) Material Information: www.alexneil.com/material-information



Canary Wharf & Docklands Office
2 Westferry Road, Canary Wharf, London E14 8JT

t: 020 7537 9859 e: sales@alexneil.com

Disclaimer: Property descriptions are subjective and used in good faith as an opinion rather than statements of fact. The owner provided information relating to title, tenure, service charges and ground rent information. Therefore, please make specific enquiries to ensure that our descriptions match your expectations of the property. Floor plan measurements are approximate and for illustrative purposes only. Furthermore, we have not tested any services, systems or appliances at this property. And we strongly recommend that you verify all the provided information on inspection and that your surveyor and conveyancer further confirm details. Also, market conditions and property values regularly fluctuate. And showcased sold properties demonstrate our previous successes rather than indicate live property values. *As advised by the owner. **Property sold subject to contract.

ALEX NEIL

ESTATE AGENTS SINCE 1984