



CALEDONIAN WHARF E14
1 bedroom apartment

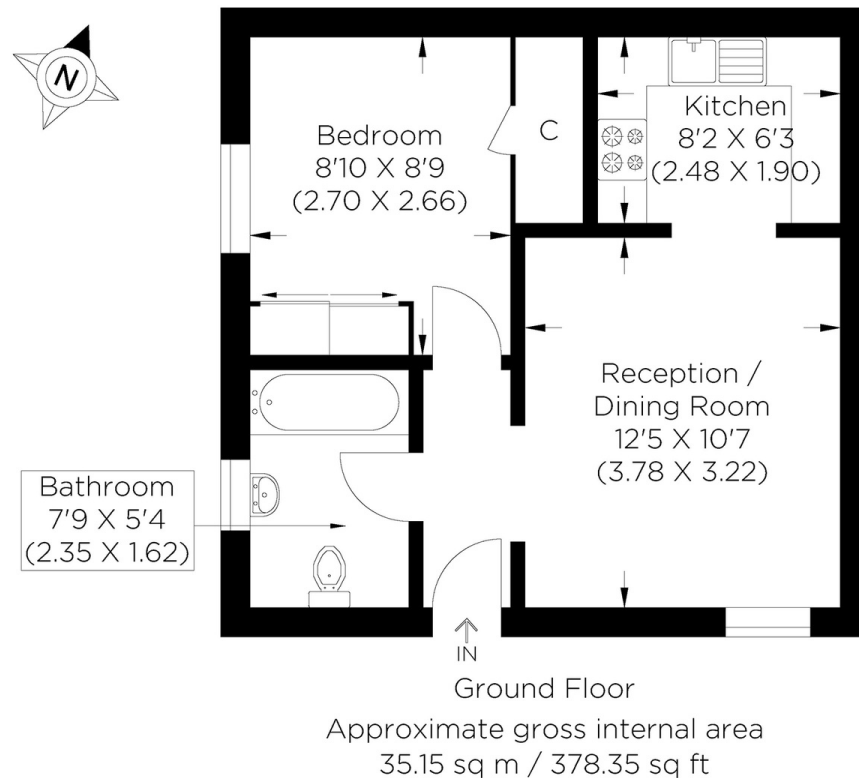
£265,000
LEASEHOLD



CALEDONIAN WHARF E14

Served by its own entrance is this well-presented one-bedroom apartment in Caledonian Wharf, Isle Of Dogs E14, a docklands riverside development. The accommodation comprises entrance hall, lounge with semi open plan fitted kitchen, bedroom and a contemporary bathroom suite. Local transport links include Island Garden DLR station, allowing easy access to Greenwich, Canary Wharf the the City. This property benefits from an allocated parking space and is being sold chain-free. We recommend booking your earliest viewing appointment, as properties of this price are rare to the local market.

Borough: Tower Hamlets* Council Tax: D* EPC: E Lease Term: 122 years* Service Charge: £1,160* Ground Rent: £25*
Nearest Station: Island Gardens (0.32 miles) Material Information: www.alexneil.com/material-information



Canary Wharf & Docklands Office
2 Westferry Road, Canary Wharf, London E14 8JT

t: 020 7537 9859 e: sales@alexneil.com

Disclaimer: Property descriptions are subjective and used in good faith as an opinion rather than statements of fact. The owner provided information relating to title, tenure, service charges and ground rent information. Therefore, please make specific enquiries to ensure that our descriptions match your expectations of the property. Floor plan measurements are approximate and for illustrative purposes only. Furthermore, we have not tested any services, systems or appliances at this property. And we strongly recommend that you verify all the provided information on inspection and that your surveyor and conveyancer further confirm details. Also, market conditions and property values regularly fluctuate. And showcased sold properties demonstrate our previous successes rather than indicate live property values. *As advised by the owner. **Property sold subject to contract.



ALEX NEIL

ESTATE AGENTS SINCE 1984