



QUAYSIDE HOUSE E14  
**2 bedroom apartment**

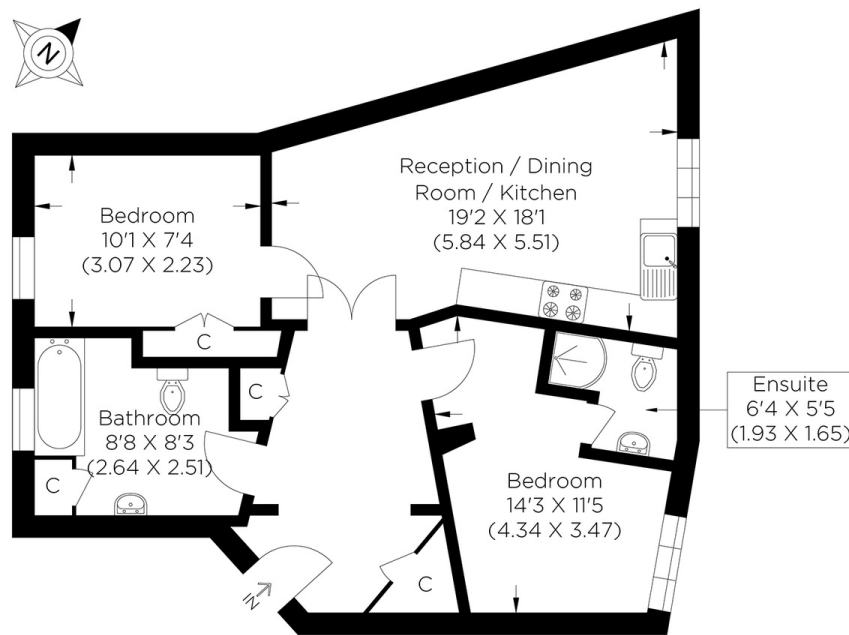
**£460,000**  
LEASEHOLD



# QUAYSIDE HOUSE E14

A Two bedroom apartment located on the first floor of this sought after Quayside landmark 'warehouse style' development, perfectly located within walking distance to the Canary Wharf business complex. This property comprises of a reception room with an open plan fitted kitchen, two bedrooms (master with en-suite) and modern bathroom. The Quayside and Cascades Tower development boasts residents leisure facilities including swimming pool, gymnasium, communal gardens, 24 hour concierge service and a private tennis court. This apartment's ideal location is perfect for access to Canary Wharf's abundant amenities, including many shops, bars and restaurants. Nearby Canary Wharf's Stations provide Cascades residents with excellent travel connections. This property is also offered with an allocated parking space and is available with no onward chain.

Borough: Tower Hamlets\* Council Tax: E\* EPC: C Lease Term: 999 years\* Service Charge: £17,000\* Ground Rent: TBA  
Nearest Station: Heron Quays (0.2 miles) Material Information: [www.alexneil.com/material-information](http://www.alexneil.com/material-information)



First Floor

Approximate gross internal area  
54.08 sq m / 582.11 sq ft

**Canary Wharf & Docklands Office**  
**2 Westferry Road, Canary Wharf, London E14 8JT**

**t: 020 7537 9859 e: [sales@alexneil.com](mailto:sales@alexneil.com)**

Disclaimer: Property descriptions are subjective and used in good faith as an opinion rather than statements of fact. The owner provided information relating to title, tenure, service charges and ground rent information. Therefore, please make specific enquiries to ensure that our descriptions match your expectations of the property. Floor plan measurements are approximate and for illustrative purposes only. Furthermore, we have not tested any services, systems or appliances at this property. And we strongly recommend that you verify all the provided information on inspection and that your surveyor and conveyancer further confirm details. Also, market conditions and property values regularly fluctuate. And showcased sold properties demonstrate our previous successes rather than indicate live property values. \*As advised by the owner. \*\*Property sold subject to contract.



# ALEX NEIL

ESTATE AGENTS SINCE 1984