



HUTCHINGS WHARF E14
3 bedroom apartment

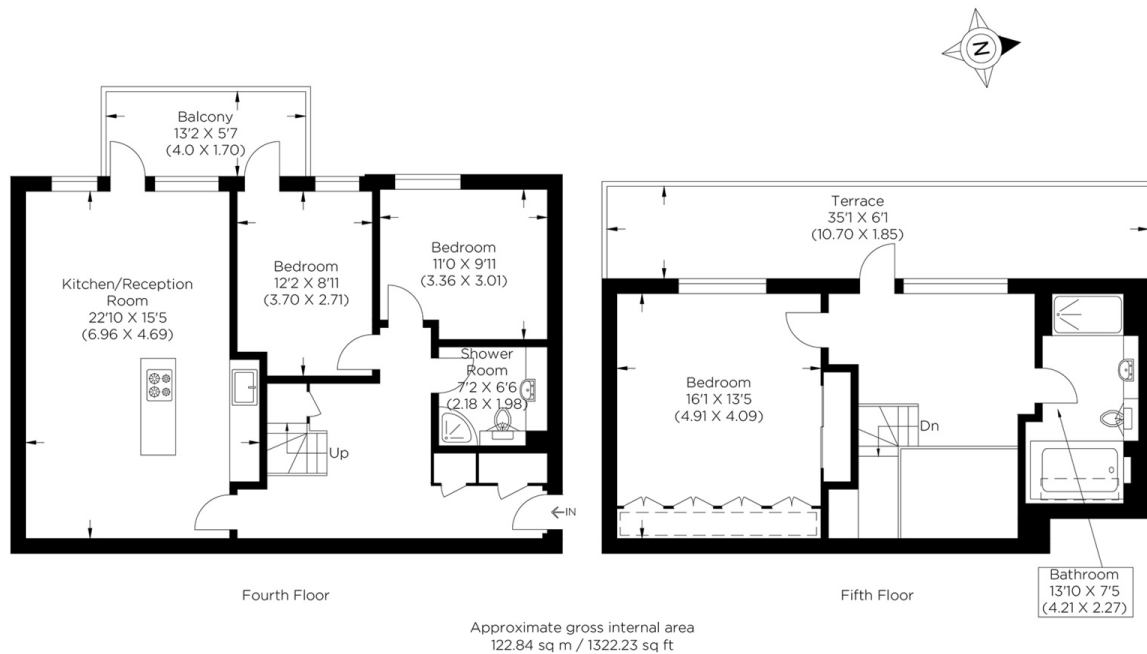
£650,000
LEASEHOLD



HUTCHINGS WHARF E14

Offered to the market is this spacious three bedroom split level top floor apartment, within this secure purpose built block within walking distance of the Canary Wharf business complex. The property spans over 1300 square feet, benefiting from having generous room proportions with the added benefit of a secure allocated parking space and being sold chain free. On the first floor the accommodation comprises an entrance hall with a stunning feature staircase, large reception room with an open plan contemporary fitted kitchen and private balcony with set back River views, two double bedrooms and separate shower room. On the second floor there is a principal bedroom with a large terrace and fully fitted bathroom with Jacuzzi bath and multi jet double shower. Hutchings Wharf benefits from an onsite concierge service and is located within a prime Canary wharf, London Docklands location.

Borough: Tower Hamlets* Council Tax: E* EPC: C Lease Term: 98 years* Service Charge: £7,520* Ground Rent: £200*
Nearest Station: Heron Quays (0.35 miles) Material Information: www.alexneil.com/material-information



Canary Wharf & Docklands Office
2 Westferry Road, Canary Wharf, London E14 8JT

t: 020 7537 9859 e: sales@alexneil.com

Disclaimer: Property descriptions are subjective and used in good faith as an opinion rather than statements of fact. The owner provided information relating to title, tenure, service charges and ground rent information. Therefore, please make specific enquiries to ensure that our descriptions match your expectations of the property. Floor plan measurements are approximate and for illustrative purposes only. Furthermore, we have not tested any services, systems or appliances at this property. And we strongly recommend that you verify all the provided information on inspection and that your surveyor and conveyancer further confirm details. Also, market conditions and property values regularly fluctuate. And showcased sold properties demonstrate our previous successes rather than indicate live property values. *As advised by the owner. **Property sold subject to contract.

ALEX NEIL

ESTATE AGENTS SINCE 1984