



LANDMARK PINNACLE E14  
**studio apartment**

**£500,000**  
LEASEHOLD

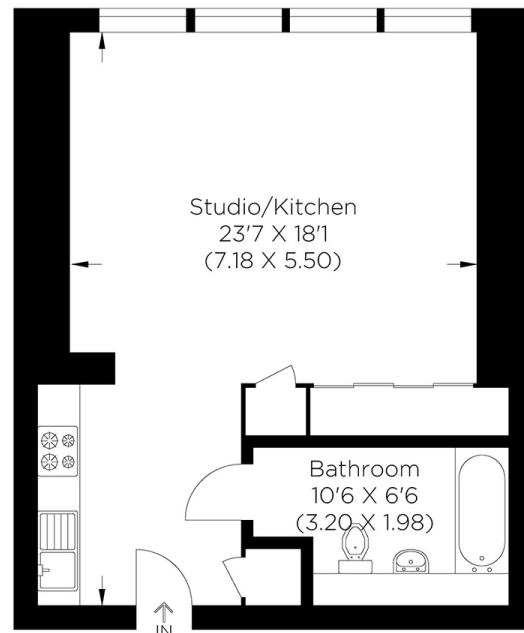




# LANDMARK PINNACLE E14

A Stunning Studio apartment located on the 46th floor of the iconic Landmark Pinnacle E14, this beautifully finished studio apartment offers breathtaking views over the Thames, through floor-to-ceiling windows. The open-plan layout includes a sleek kitchen, modern bathroom, and a compartmentalised bedroom area. The Landmark offers a fully enclosed winter garden perfect for year-round enjoyment. High-end features include underfloor heating, comfort cooling, and premium fittings throughout. Residents benefit from exceptional amenities: a gym, exercise and Pilates studios, relaxation lounge, private dining rooms, and a rooftop terrace on the 75th floor with panoramic city views. Set just a few minutes walk from Heron Quays DLR and a short stroll to Canary Wharf, this studio offers luxury living with unbeatable connectivity.

Borough: Tower Hamlets\* Council Tax: E\* EPC: B Lease Term: 99 years\* Service Charge: £2,500\* Ground Rent: £500\*  
Nearest Station: Poplar (0.14 miles) Material Information: [www.alexneil.com/material-information](http://www.alexneil.com/material-information)



Forty Sixth Floor

Approximate gross internal area  
42.36 sq m / 455.95 sq ft



**Canary Wharf & Docklands Office**  
**2 Westferry Road, Canary Wharf, London E14 8JT**

**t: 020 7537 9859 e: [sales@alexneil.com](mailto:sales@alexneil.com)**

Disclaimer: Property descriptions are subjective and used in good faith as an opinion rather than statements of fact. The owner provided information relating to title, tenure, service charges and ground rent information. Therefore, please make specific enquiries to ensure that our descriptions match your expectations of the property. Floor plan measurements are approximate and for illustrative purposes only. Furthermore, we have not tested any services, systems or appliances at this property. And we strongly recommend that you verify all the provided information on inspection and that your surveyor and conveyancer further confirm details. Also, market conditions and property values regularly fluctuate. And showcased sold properties demonstrate our previous successes rather than indicate live property values. \*As advised by the owner. \*\*Property sold subject to contract.

# ALEX NEIL

ESTATE AGENTS SINCE 1984