



MORVILLE STREET E3
2 bedroom apartment

£450,000
LEASEHOLD

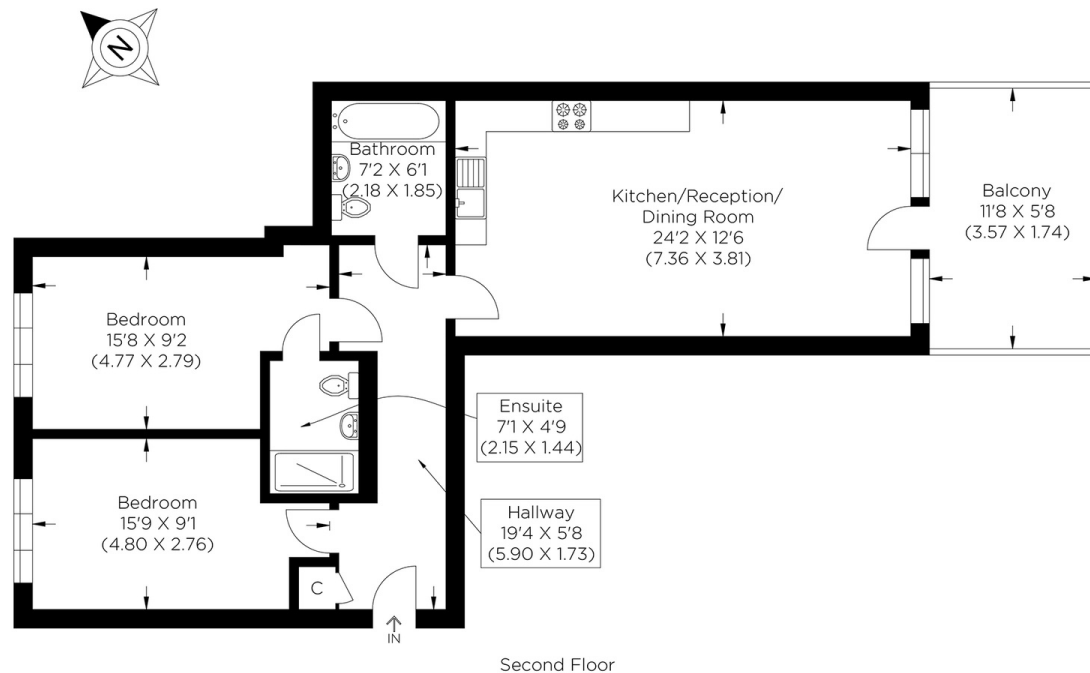


MORVILLE STREET E3

This exceptional loft-style apartment offers a blend of modern living and an enviable city lifestyle. This Chain free home is ideal for those seeking both comfort and sophistication. The accommodation comprises entrance hall, two generously sized bedrooms, master with ensuite, a contemporary bathroom, and an expansive open-plan living area with south-facing private balcony. The integrated kitchen is fitted with high-end Bosch appliances, perfect for modern day living and entertaining. Situated in one of East London's most desirable locations, the property is close to Victoria Park and the amenities of Victoria Park Village, known for its boutique shops, popular bars, and restaurants. Excellent transport links are within walking distance, including both Underground and DLR stations, offering easy access to Canary Wharf and central London. Benefits include access to a communal rooftop terrace and the reassurance that the property has been meticulously maintained by its original owners.

Borough: Tower Hamlets* Council Tax: D* EPC: B Lease Term: 145 years* Service Charge: £2,998* Ground Rent: £450*

Nearest Station: Bow Church (0.22 miles) Material Information: www.alexneil.com/material-information



Second Floor

Approximate gross internal area
70.07 sq m / 754.22 sq ft

Canary Wharf & Docklands Office
2 Westferry Road, Canary Wharf, London E14 8JT

t: 020 7537 9859 e: sales@alexneil.com

Disclaimer: Property descriptions are subjective and used in good faith as an opinion rather than statements of fact. The owner provided information relating to title, tenure, service charges and ground rent information. Therefore, please make specific enquiries to ensure that our descriptions match your expectations of the property. Floor plan measurements are approximate and for illustrative purposes only. Furthermore, we have not tested any services, systems or appliances at this property. And we strongly recommend that you verify all the provided information on inspection and that your surveyor and conveyancer further confirm details. Also, market conditions and property values regularly fluctuate. And showcased sold properties demonstrate our previous successes rather than indicate live property values. *As advised by the owner. **Property sold subject to contract.



ALEX NEIL

ESTATE AGENTS SINCE 1984