



SHACKLETON COURT E14  
**2 bedroom apartment**

**£430,000**  
LEASEHOLD

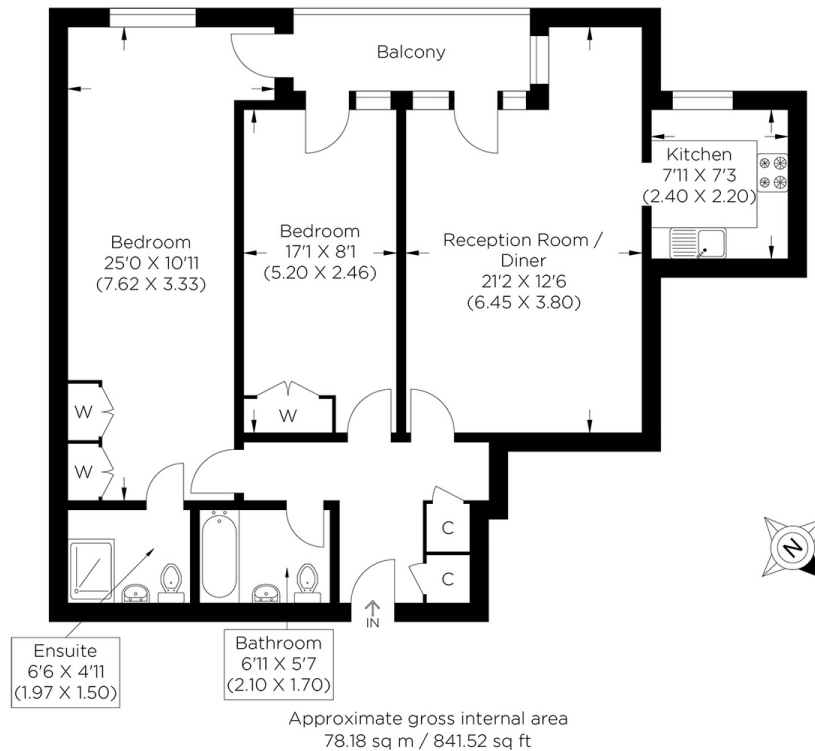




# SHACKLETON COURT E14

Located in the vibrant and highly sought after Maritime Quay E14, is this spacious two-bedroom apartment. This fantastic property presents an opportunity to enjoy comfortable and convenient living in one of London's most dynamic areas. Surrounded by a host of local amenities including cafes, shops, and restaurants. Shackleton Court benefits from secure entry systems and a well-maintained communal environment, ensuring peace of mind. Internally comprising a lounge, fitted kitchen two double bedrooms and a three-piece bathroom and a private balcony with dual access and breath-taking views. The popular Canary Wharf district is just a short walk away, offering a wide variety of retail and dining options, as well as access to the River Thames and scenic walking routes. With excellent links to the city and beyond, this flat is perfectly situated for both work and leisure.

Borough: Tower Hamlets\* Council Tax: E\* EPC: C Lease Term: 98 years\* Service Charge: £4,190\* Ground Rent: £597\*  
Nearest Station: Mudchute (0.38 miles) Material Information: [www.alexneil.com/material-information](http://www.alexneil.com/material-information)



**Canary Wharf & Docklands Office**  
**2 Westferry Road, Canary Wharf, London E14 8JT**

**t: 020 7537 9859 e: [sales@alexneil.com](mailto:sales@alexneil.com)**

Disclaimer: Property descriptions are subjective and used in good faith as an opinion rather than statements of fact. The owner provided information relating to title, tenure, service charges and ground rent information. Therefore, please make specific enquiries to ensure that our descriptions match your expectations of the property. Floor plan measurements are approximate and for illustrative purposes only. Furthermore, we have not tested any services, systems or appliances at this property. And we strongly recommend that you verify all the provided information on inspection and that your surveyor and conveyancer further confirm details. Also, market conditions and property values regularly fluctuate. And showcased sold properties demonstrate our previous successes rather than indicate live property values. \*As advised by the owner. \*\*Property sold subject to contract.



## ALEX NEIL

ESTATE AGENTS SINCE 1984