



APHRODITE COURT E14
1 bedroom apartment

£250,000

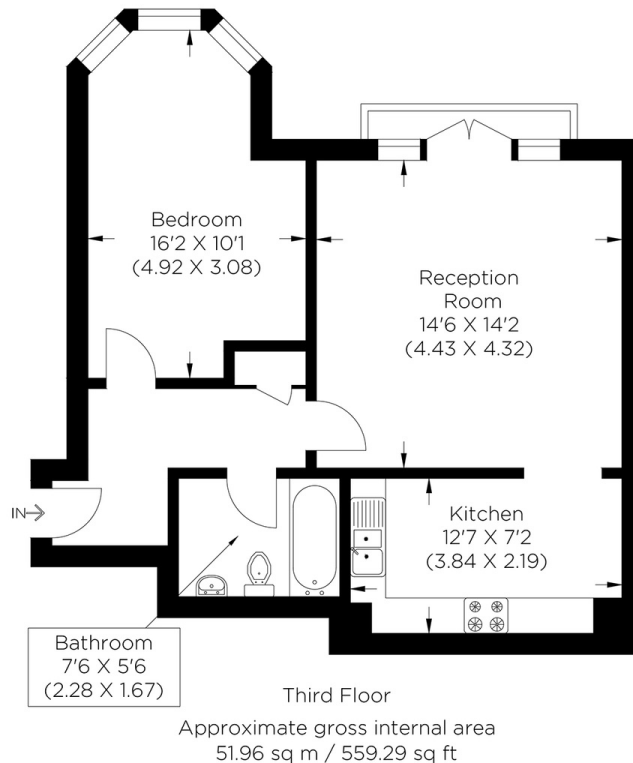
SHARE OF
FREEHOLD



APHRODITE COURT E14

We present a one-bedroom, third-floor apartment in Aphrodite Court, Homer Drive, Isle of Dogs E14. Aphrodite Court is part of Cyclops Wharf, a secure gated Riverside development convenient for Canary Wharf access. This well-proportioned property comprises of a reception room with a Juliette balcony, a fitted kitchen, double bedroom and a three-piece bathroom. The property also from an allocated parking space. The development has concierge services, a gym, a swimming pool and leisure facilities. Cyclops Wharf is moments from the local amenities of Westferry Road, and allows for easy access to the shops, bars and restaurants situated in the exclusive Canary Wharf Complex. . The local transport links include Mudchute Station (DLR), connecting you to Canary Wharf's Jubilee and Elizabeth Line Stations. Aphrodite Court is offered chain free and is priced to sell.

Borough: Tower Hamlets* Council Tax: D* EPC: C Lease Term: 123 years* Service Charge: £5,520* Ground Rent: £123*
Nearest Station: Mudchute (0.45 miles) Material Information: www.alexneil.com/material-information



Canary Wharf & Docklands Office
2 Westferry Road, Canary Wharf, London E14 8JT

t: 020 7537 9859 e: sales@alexneil.com

Disclaimer: Property descriptions are subjective and used in good faith as an opinion rather than statements of fact. The owner provided information relating to title, tenure, service charges and ground rent information. Therefore, please make specific enquiries to ensure that our descriptions match your expectations of the property. Floor plan measurements are approximate and for illustrative purposes only. Furthermore, we have not tested any services, systems or appliances at this property. And we strongly recommend that you verify all the provided information on inspection and that your surveyor and conveyancer further confirm details. Also, market conditions and property values regularly fluctuate. And showcased sold properties demonstrate our previous successes rather than indicate live property values. *As advised by the owner. **Property sold subject to contract.

ALEX NEIL

ESTATE AGENTS SINCE 1984