



HESPERUS CRESCENT E14
2 bedroom terraced house

£569,995
FREEHOLD

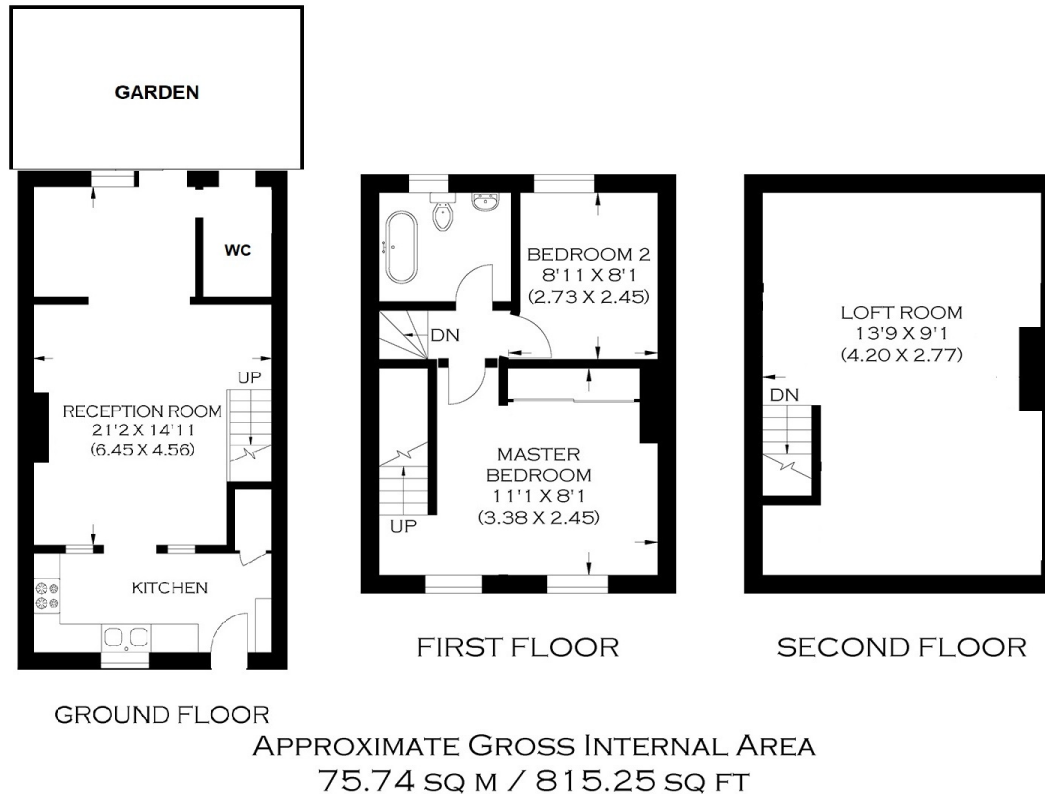


HESPERUS CRESCENT E14

This well-presented two-bedroom terraced house is in the highly desirable Hesperus Crescent on the Isle of Dogs in E14. It features a contemporary interior and generous living space comprising a spacious reception room with access to a light-filled conservatory, a modern fitted kitchen, two double bedrooms, a loft room, a family bathroom, and a ground-floor shower room. The low-maintenance private rear garden provides the perfect space for your morning coffee or drinks with friends. The travel connections are excellent whether you drive, cycle or use local buses or Mudchute DLR for Greenwich or Canary Wharf. Hesperus Crescent has residents parking and is a perfect location for enjoyment of the surrounding docks, the river, Mudchute Park and the fantastic selection of shops, bars and restaurants in Canary Wharf.

Borough: Tower Hamlets* Council Tax: D* EPC: D

Nearest Station: Mudchute (0.13 miles) Material Information: www.alexneil.com/material-information



Canary Wharf & Docklands Office
2 Westferry Road, Canary Wharf, London E14 8JT

t: 020 7537 9859 e: sales@alexneil.com

Disclaimer: Property descriptions are subjective and used in good faith as an opinion rather than statements of fact. The owner provided information relating to title, tenure, service charges and ground rent information. Therefore, please make specific enquiries to ensure that our descriptions match your expectations of the property. Floor plan measurements are approximate and for illustrative purposes only. Furthermore, we have not tested any services, systems or appliances at this property. And we strongly recommend that you verify all the provided information on inspection and that your surveyor and conveyancer further confirm details. Also, market conditions and property values regularly fluctuate. And showcased sold properties demonstrate our previous successes rather than indicate live property values. *As advised by the owner. **Property sold subject to contract.



ALEX NEIL

ESTATE AGENTS SINCE 1984