



INDESCON SQUARE E14
3 bedroom apartment

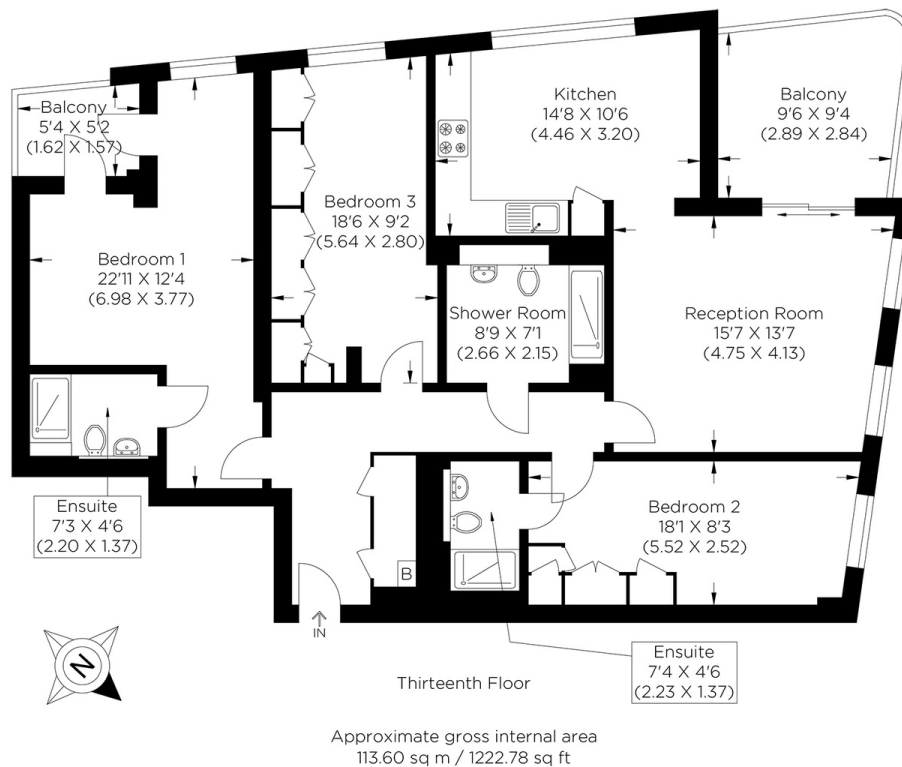
£750,000
LEASEHOLD



INDESCON SQUARE E14

This spacious apartment is in contemporary Indescon Square near Canary Wharf in vibrant South Quay, E14. It features three bedrooms, three bathrooms, a stunning reception room, and a modern kitchen, all in excellent condition. It offers beautiful westerly views across the Isle of Dogs towards the River Thames, with a clear sightline to Canary Wharf. The apartment benefits from two large balconies and two parking spaces and is chain-free! Indescon Square offers concierge services and is in an ideal position for the financial district and Canary Wharf's plazas. This property would suit professionals and is highly convenient for the plethora of trendy bars and restaurants that Canary Wharf encompasses. South Quay DLR is nearby and provides a fast connection to Canary Wharf for cross-London travel via the Jubilee and Elizabeth Lines.

Borough: Tower Hamlets* Council Tax: G* EPC: B Lease Term: 999 years* Service Charge: £6,500* Ground Rent: £500*
Nearest Station: South Quay (0.21 miles) Material Information: www.alexneil.com/material-information



Canary Wharf & Docklands Office
2 Westferry Road, Canary Wharf, London E14 8JT

t: 020 7537 9859 e: sales@alexneil.com

Disclaimer: Property descriptions are subjective and used in good faith as an opinion rather than statements of fact. The owner provided information relating to title, tenure, service charges and ground rent information. Therefore, please make specific enquiries to ensure that our descriptions match your expectations of the property. Floor plan measurements are approximate and for illustrative purposes only. Furthermore, we have not tested any services, systems or appliances at this property. And we strongly recommend that you verify all the provided information on inspection and that your surveyor and conveyancer further confirm details. Also, market conditions and property values regularly fluctuate. And showcased sold properties demonstrate our previous successes rather than indicate live property values. *As advised by the owner. **Property sold subject to contract.

ALEX NEIL

ESTATE AGENTS SINCE 1984