



SCHOONER CLOSE E14
2 bedroom maisonette

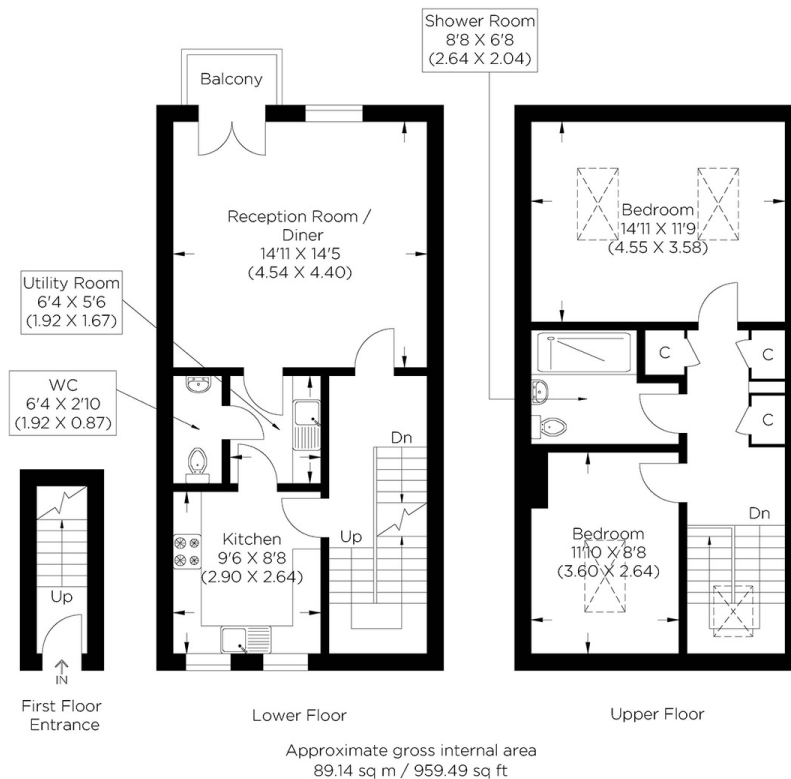
£450,000
SOLD



SCHOONER CLOSE E14

This fantastic two-bedroom, split-level maisonette is on Schooner Close, Isle of Dogs, E14, part of a private residential development. This property boasts abundant natural light and comprises a spacious reception room, a separate fitted kitchen, a utility room, two double bedrooms, a family bathroom and an extra WC. Featuring a private balcony, storage, a loft and a parking space. Schooner Close is a convenient cul de sac close to the River Thames, with Mudchute Park & Farm and Island Gardens Park also within easy reach. Commuters enjoy proximity to Island Gardens and Crossharbour DLR, which provide fast journey times to Canary Wharf and Central London via the Jubilee and Elizabeth Line.

Borough: Tower Hamlets* Council Tax: D* EPC: C Lease Term: 972 years* Service Charge: £1,980* Ground Rent: £25*
Nearest Station: Crossharbour (0.4 miles) Material Information: www.alexneil.com/material-information



Canary Wharf & Docklands Office
2 Westferry Road, Canary Wharf, London E14 8JT

t: 020 7537 9859 e: sales@alexneil.com

Disclaimer: Property descriptions are subjective and used in good faith as an opinion rather than statements of fact. The owner provided information relating to title, tenure, service charges and ground rent information. Therefore, please make specific enquiries to ensure that our descriptions match your expectations of the property. Floor plan measurements are approximate and for illustrative purposes only. Furthermore, we have not tested any services, systems or appliances at this property. And we strongly recommend that you verify all the provided information on inspection and that your surveyor and conveyancer further confirm details. Also, market conditions and property values regularly fluctuate. And showcased sold properties demonstrate our previous successes rather than indicate live property values. *As advised by the owner. **Property sold subject to contract.

ALEX NEIL

ESTATE AGENTS SINCE 1984