



ROTTERDAM DRIVE E14

3 bedroom terraced house

£725,000

FREEHOLD

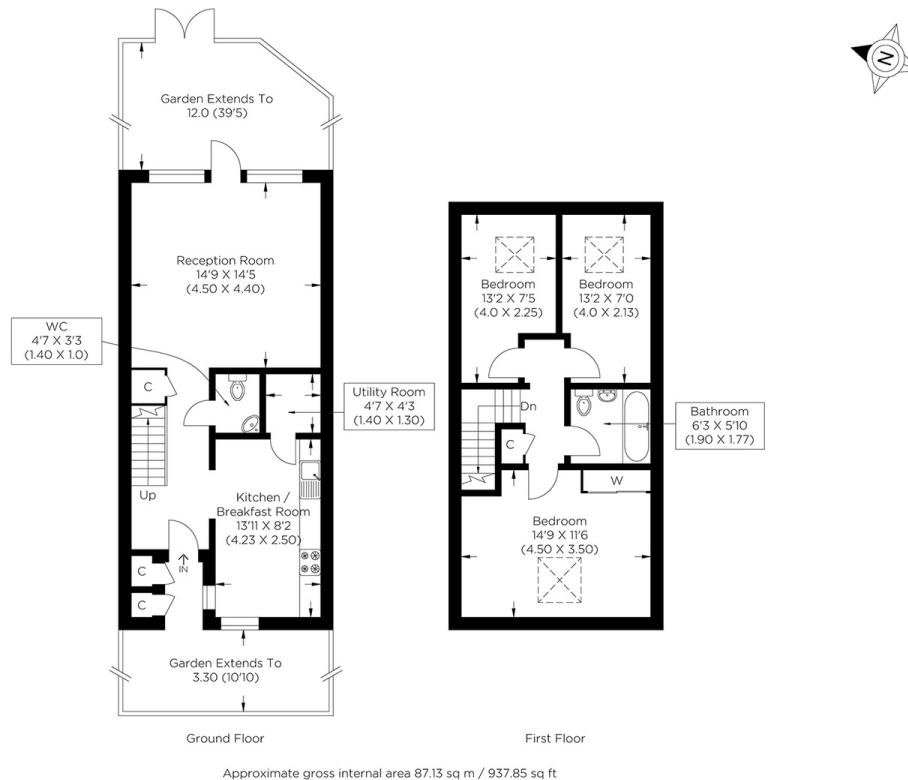


ROTTERDAM DRIVE E14

We are delighted to offer this rarely available stunning freehold house for sale in a sought-after private riverside development on Rotterdam Drive, Isle of Dogs E14. Forming part of London Yard and overlooking a large, beautiful wildlife pond, the property benefits from a caretaker and gardeners who maintain the stunning communal areas. Rotterdam Drive is conveniently located near local amenities, including an Asda Superstore and Crossharbour DLR, providing direct access to Canary Wharf and the Jubilee and Elizabeth Lines. The purchaser of this property will not need to lift a finger as the current owners have completely refurbished the house to a very high standard, making this chain-free property a perfect family home. Additional features include allocated parking and a well-maintained garden. We highly recommend scheduling a viewing at your earliest convenience.

Borough: Tower Hamlets* Council Tax: E* EPC: C

Nearest Station: Crossharbour (0.32 miles) Material Information: www.alexneil.com/material-information



Canary Wharf & Docklands Office
2 Westferry Road, Canary Wharf, London E14 8JT

t: 020 7537 9859 e: canarywharf@alexneil.com

Disclaimer: Property descriptions are subjective and used in good faith as an opinion rather than statements of fact. The owner provided information relating to title, tenure, service charges and ground rent information. Therefore, please make specific enquiries to ensure that our descriptions match your expectations of the property. Floor plan measurements are approximate and for illustrative purposes only. Furthermore, we have not tested any services, systems or appliances at this property. And we strongly recommend that you verify all the provided information on inspection and that your surveyor and conveyancer further confirm details. Also, market conditions and property values regularly fluctuate. And showcased sold properties demonstrate our previous successes rather than indicate live property values. *As advised by the owner. **Property sold subject to contract.

ALEX NEIL

ESTATE AGENTS SINCE 1984

2024 signifies our **40th Anniversary**, and we are immensely proud to have reached this impressive longevity milestone. In celebration, we launched an **exceptional promotion** for sellers, affording them increased marketing exposure for free!

40 years of expertise: With four decades of experience, we bring a wealth of knowledge and expertise. Our durability is a testament to the trust satisfied clients place in us. We understand the nuances of the diverse neighbourhoods we cover. Our local expertise allows us to provide tailored solutions, whether you're buying or selling, allowing you to move with confidence.



ALEX NEIL

ESTATE AGENTS SINCE 1984

www.alexneil.com