



ROGERS COURT E14  
**2 bedroom apartment**

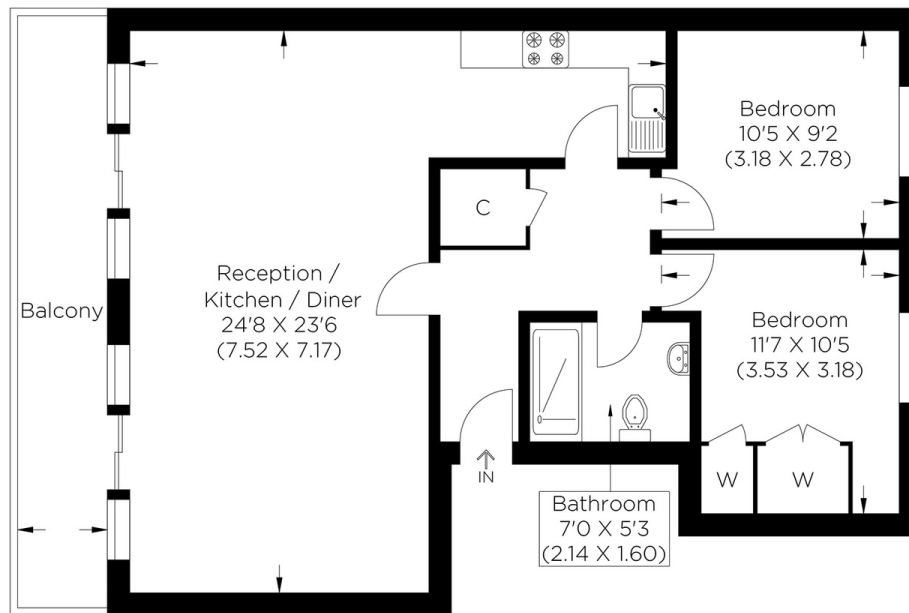
**£550,000**  
LEASEHOLD



# ROGERS COURT E14

We present this stunning penthouse top-floor apartment with a larger-than-average balcony in desirable Rogers Court, Premiere Place, Canary Wharf, E14. The accommodation comprises a huge living space with views of the financial district and beyond. There are two bedrooms, a family bathroom, ample storage throughout and parking. The development offers daytime concierge services and lift access. Rogers Court is within walking distance of three major transport stations, West India Quay DLR, Canary Wharf Elizabeth Line and Jubilee Line stations, offering a fortitude of transport options to all areas of the City whether north, south, east or west. Canary Wharf has everything to provide residents with, including shops, services, bars, restaurants, waterways, and green spaces, on your doorstep. The property is chain-free, and we highly recommend viewing it.

Borough: Tower Hamlets\* Council Tax: D\* EPC: D Lease Term: 971 years\* Service Charge: £4,500\* Ground Rent: TBA  
Nearest Station: Westferry (0.06 miles) Material Information: [www.alexneil.com/material-information](http://www.alexneil.com/material-information)



Fourth Floor

Approximate gross internal area  
67.22 sq m / 723.55 sq ft



**Canary Wharf & Docklands Office**  
2 Westferry Road, Canary Wharf, London E14 8JT

t: 020 7537 9859 e: [canarywharf@alexneil.com](mailto:canarywharf@alexneil.com)

Disclaimer: Property descriptions are subjective and used in good faith as an opinion rather than statements of fact. The owner provided information relating to title, tenure, service charges and ground rent information. Therefore, please make specific enquiries to ensure that our descriptions match your expectations of the property. Floor plan measurements are approximate and for illustrative purposes only. Furthermore, we have not tested any services, systems or appliances at this property. And we strongly recommend that you verify all the provided information on inspection and that your surveyor and conveyancer further confirm details. Also, market conditions and property values regularly fluctuate. And showcased sold properties demonstrate our previous successes rather than indicate live property values. \*As advised by the owner. \*\*Property sold subject to contract.

# ALEX NEIL

ESTATE AGENTS SINCE 1984

2024 signifies our **40th Anniversary**, and we are immensely proud to have reached this impressive longevity milestone. In celebration, we launched an **exceptional promotion** for sellers, affording them increased marketing exposure for free!

**40 years of expertise:** With four decades of experience, we bring a wealth of knowledge and expertise. Our durability is a testament to the trust satisfied clients place in us. We understand the nuances of the diverse neighbourhoods we cover. Our local expertise allows us to provide tailored solutions, whether you're buying or selling, allowing you to move with confidence.



ALEX NEIL

ESTATE AGENTS SINCE 1984

[www.alexneil.com](http://www.alexneil.com)