



PERRY COURT E14
2 bedroom apartment

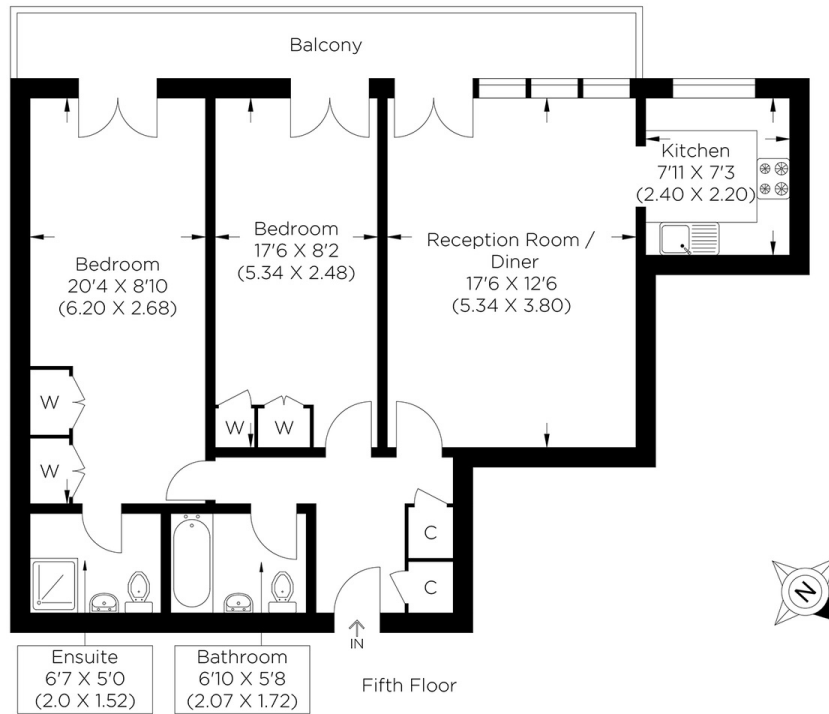
£425,000+
SOLD STC**



PERRY COURT E14

This modern two-bedroom apartment boasts a top-floor setting in the highly sought-after Perry Court, Maritime Quay, Isle of Dogs E14. The spacious accommodation provides stunning river views via a private balcony. Set within a secure development, Perry Court enjoys idyllic placement with wonderful riverside walks on hand, while the hustle and bustle of Canary Wharf's attractions are within easy reach via Mudchute and Island Gardens DLR Stations. Nearby Masthouse Pier offers pleasant, scenic ferry journeys and commutes. The apartment is well presented throughout and consists of a large reception room, a contemporary fitted kitchen, two double bedrooms and a family bathroom. The floor-to-ceiling windows immerse the apartment with abundant natural light. This chain-free property further benefits from ample storage and secure parking. We recommend organising your earliest viewing appointment.

Borough: Tower Hamlets* Council Tax: E* EPC: E Lease Term: 100 years* Service Charge: £3,655* Ground Rent: £589*
Nearest Station: Mudchute (0.37 miles) Material Information: www.alexneil.com/material-information



Approximate gross internal area
71.45 sq m / 769.08 sq ft



Canary Wharf & Docklands Office
2 Westferry Road, Canary Wharf, London E14 8JT

t: 020 7537 9859 e: sales@alexneil.com

Disclaimer: Property descriptions are subjective and used in good faith as an opinion rather than statements of fact. The owner provided information relating to title, tenure, service charges and ground rent information. Therefore, please make specific enquiries to ensure that our descriptions match your expectations of the property. Floor plan measurements are approximate and for illustrative purposes only. Furthermore, we have not tested any services, systems or appliances at this property. And we strongly recommend that you verify all the provided information on inspection and that your surveyor and conveyancer further confirm details. Also, market conditions and property values regularly fluctuate. And showcased sold properties demonstrate our previous successes rather than indicate live property values. *As advised by the owner. **Property sold subject to contract.

ALEX NEIL

ESTATE AGENTS SINCE 1984