



WICK LANE E3  
**2 bedroom apartment**

**£625,000**  
LEASEHOLD

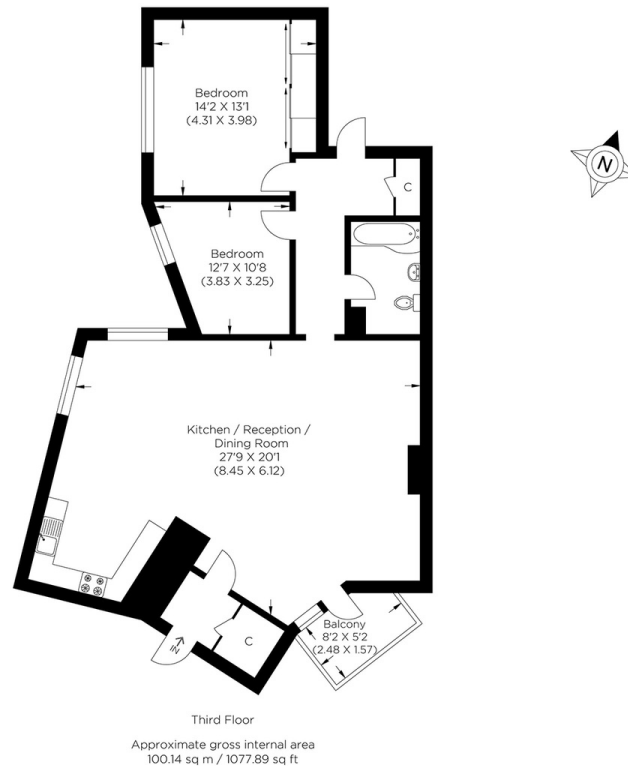




# WICK LANE E3

Step into luxury with this exceptionally spacious two-bedroom apartment in Wick Lane, Hackney Wick E3. This high-specification apartment offers views over the beautifully maintained communal gardens, views towards the City of London and views of the Canal from the kitchen! this apartment perfectly combines space with the size being over 1000 sqft plus and luxurious living. The accommodation's layout maximises natural light and comprises a generous open-plan style living/dining/kitchen, a recently renovated bathroom which has been beautifully designed by the current owner, a private balcony, and abundant storage options. The location of 417 Riverside is superb, with excellent transport links and the famous Victoria Park, Westfield Stratford and highly rated schools within walking distance.

Borough: Tower Hamlets\* Council Tax: D\* EPC: C Lease Term: 109 years\* Service Charge: £4,364\* Ground Rent: £250\*  
Nearest Station: Pudding Mill Lane (0.41 miles) Material Information: [www.alexneil.com/material-information](http://www.alexneil.com/material-information)



**Canary Wharf & Docklands Office**  
2 Westferry Road, Canary Wharf, London E14 8JT

t: 020 7537 9859 e: [canarywharf@alexneil.com](mailto:canarywharf@alexneil.com)

Disclaimer: Property descriptions are subjective and used in good faith as an opinion rather than statements of fact. The owner provided information relating to title, tenure, service charges and ground rent information. Therefore, please make specific enquiries to ensure that our descriptions match your expectations of the property. Floor plan measurements are approximate and for illustrative purposes only. Furthermore, we have not tested any services, systems or appliances at this property. And we strongly recommend that you verify all the provided information on inspection and that your surveyor and conveyancer further confirm details. Also, market conditions and property values regularly fluctuate. And showcased sold properties demonstrate our previous successes rather than indicate live property values. \*As advised by the owner. \*\*Property sold subject to contract.

# ALEX NEIL

ESTATE AGENTS SINCE 1984

2024 signifies our **40th Anniversary**, and we are immensely proud to have reached this impressive longevity milestone. In celebration, we launched an **exceptional promotion** for sellers, affording them increased marketing exposure for free!

**40 years of expertise:** With four decades of experience, we bring a wealth of knowledge and expertise. Our durability is a testament to the trust satisfied clients place in us. We understand the nuances of the diverse neighbourhoods we cover. Our local expertise allows us to provide tailored solutions, whether you're buying or selling, allowing you to move with confidence.



ALEX NEIL

ESTATE AGENTS SINCE 1984

[www.alexneil.com](http://www.alexneil.com)