



HEPBURN HOUSE SE16  
**2 bedroom duplex apartment**

**£475,000+**  
LEASEHOLD

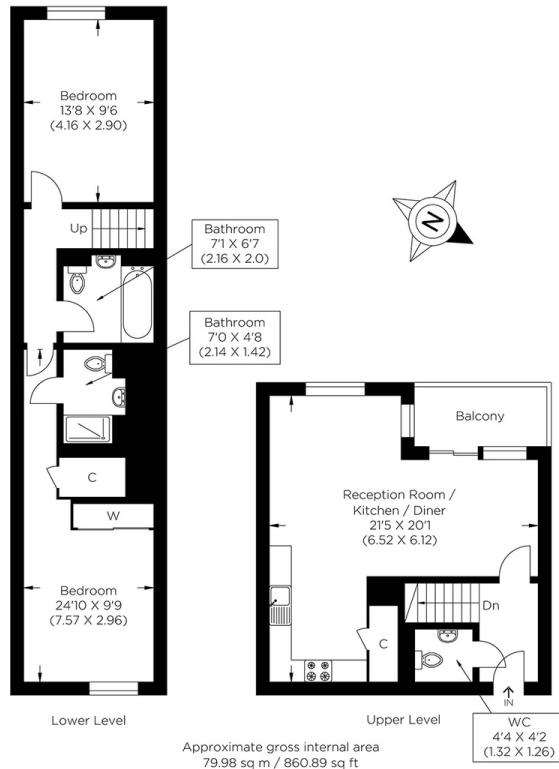




# HEPBURN HOUSE SE16

This stylish two double-bedroom duplex apartment is on the top floor of Hepburn House, Verney Road Bermondsey SE16. The Bermondsey Works development boasts a breath-taking roof terrace with stunning views over London. This Chain Free accommodation comprises a large open plan kitchen - living room with stunning views over the City Skyline, two spacious double bedrooms, an en-suite to the master, a stylish three-piece family bathroom and an additional water closet. The property also benefits from a very attentive 24-hour concierge service, a well equipped gymnasium, underground parking for residents and plenty of storage solutions. Hepburn House also offers great transport links into the City and Central London. A wealth of shops and eateries is also within easy reach, further adding to the convenience. We highly recommend organising your appointment to view it.

Borough: Southwark\* Council Tax: D\* EPC: B Lease Term: 990 years\* Service Charge: £3,559\* Ground Rent: £450\*  
Nearest Station: South Bermondsey (0.46 miles) Material Information: [www.alexneil.com/material-information](http://www.alexneil.com/material-information)



**Rotherhithe & Bermondsey Office**  
146 Lower Road, London SE16 2UG

t: 020 7237 6767 e: [rotherhithe@alexneil.com](mailto:rotherhithe@alexneil.com)

Disclaimer: Property descriptions are subjective and used in good faith as an opinion rather than statements of fact. The owner provided information relating to title, tenure, service charges and ground rent information. Therefore, please make specific enquiries to ensure that our descriptions match your expectations of the property. Floor plan measurements are approximate and for illustrative purposes only. Furthermore, we have not tested any services, systems or appliances at this property. And we strongly recommend that you verify all the provided information on inspection and that your surveyor and conveyancer further confirm details. Also, market conditions and property values regularly fluctuate. And showcased sold properties demonstrate our previous successes rather than indicate live property values. \*As advised by the owner. \*\*Property sold subject to contract.

# ALEX NEIL

ESTATE AGENTS SINCE 1984

2024 signifies our **40th Anniversary**, and we are immensely proud to have reached this impressive longevity milestone. In celebration, we launched an **exceptional promotion** for sellers, affording them increased marketing exposure for free!

**40 years of expertise:** With four decades of experience, we bring a wealth of knowledge and expertise. Our durability is a testament to the trust satisfied clients place in us. We understand the nuances of the diverse neighbourhoods we cover. Our local expertise allows us to provide tailored solutions, whether you're buying or selling, allowing you to move with confidence.



ALEX NEIL

ESTATE AGENTS SINCE 1984

[www.alexneil.com](http://www.alexneil.com)