



SCHOONER CLOSE E14  
**2 bedroom maisonette**

**£475,000**  
SOLD STC\*\*



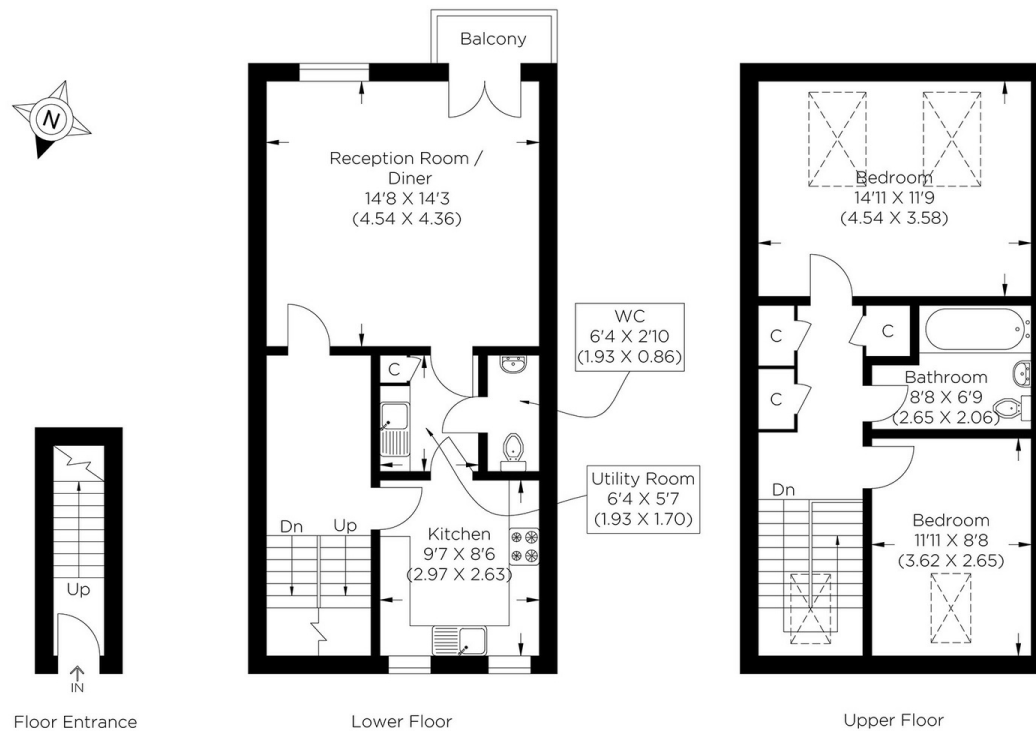


# SCHOONER CLOSE E14

We present a stunning share of freehold split-level maisonette with two double bedrooms perfectly positioned within Schooner Close, Isle of Dogs, E14, a private riverside complex. This duplex apartment spans just under 1000 sqft! The first floor boasts a beautifully presented lounge with abundant light throughout, a separate kitchen with a modern finish, fully fitted amenities and an adjoining utility area. The spacious lounge area has a spectacular finish and offers space for a dining area. The floor-to-ceiling patio doors provide access to the private balcony. On the upper level, two tastefully designed double bedrooms with complementing large skylight windows illuminate the rooms with natural light. There is a sleek family bathroom and ample storage space. Schooner Close is well-positioned for walks to Mudchute Park and the convenient bus routes. The nearby DLR stations at Island Gardens provide easy access to Canary Wharf and Central London via the Jubilee and Elizabeth Line.

Borough: Tower Hamlets\* Council Tax: D\* EPC: B Lease Term: 972 years\* Service Charge: £1,980\* Ground Rent: £25\*

Nearest Station: Crossharbour (0.4 miles) Material Information: [www.alexneil.com/material-information](http://www.alexneil.com/material-information)



Approximate gross internal area  
89.78 sq m / 966.38 sq ft



**Canary Wharf & Docklands Office**  
**2 Westferry Road, Canary Wharf, London E14 8JT**

**t: 020 7537 9859 e: [canarywharf@alexneil.com](mailto:canarywharf@alexneil.com)**

Disclaimer: Property descriptions are subjective and used in good faith as an opinion rather than statements of fact. The owner provided information relating to title, tenure, service charges and ground rent information. Therefore, please make specific enquiries to ensure that our descriptions match your expectations of the property. Floor plan measurements are approximate and for illustrative purposes only. Furthermore, we have not tested any services, systems or appliances at this property. And we strongly recommend that you verify all the provided information on inspection and that your surveyor and conveyancer further confirm details. Also, market conditions and property values regularly fluctuate. And showcased sold properties demonstrate our previous successes rather than indicate live property values. \*As advised by the owner. \*\*Property sold subject to contract.

## ALEX NEIL

ESTATE AGENTS SINCE 1984

2024 signifies our **40th Anniversary**, and we are immensely proud to have reached this impressive longevity milestone. In celebration, we launched an **exceptional promotion** for sellers, affording them increased marketing exposure for free!

**40 years of expertise:** With four decades of experience, we bring a wealth of knowledge and expertise. Our durability is a testament to the trust satisfied clients place in us. We understand the nuances of the diverse neighbourhoods we cover. Our local expertise allows us to provide tailored solutions, whether you're buying or selling, allowing you to move with confidence.



ALEX NEIL

ESTATE AGENTS SINCE 1984

[www.alexneil.com](http://www.alexneil.com)