



CYCLOPS MEWS E14
4 bedroom terraced house

£650,000+
FREEHOLD

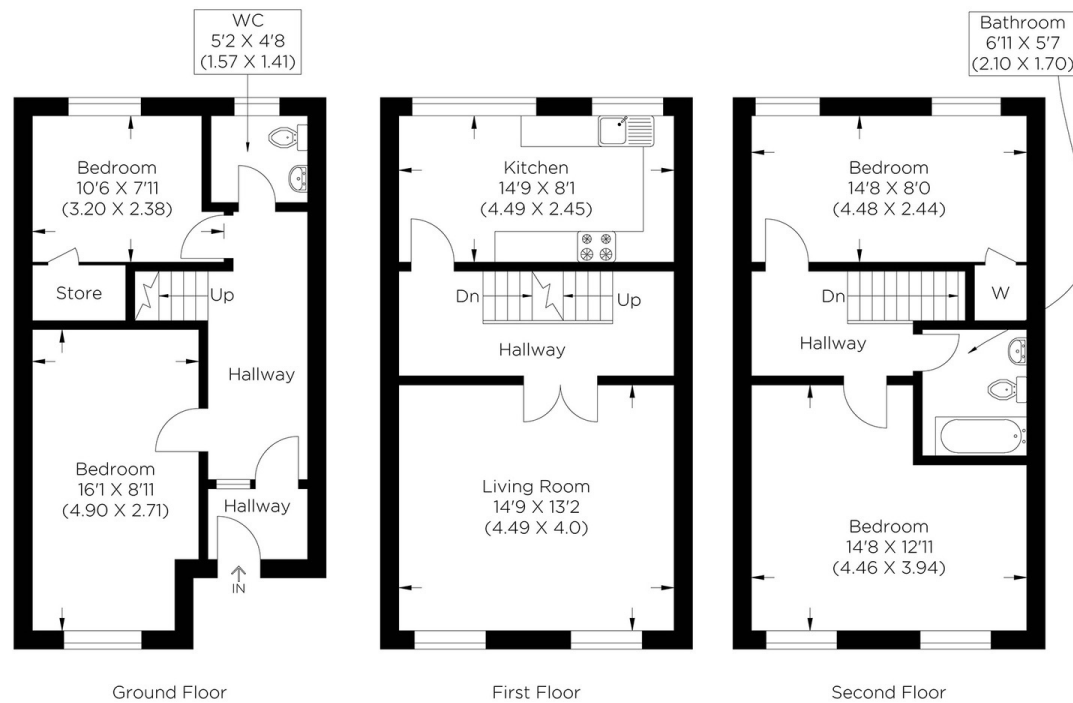


CYCLOPS MEWS E14

We present an extremely well-proportioned and quality house in the sought-after Cyclops Mews, Isle of Dogs, E14. This four-bedroom freehold house comes to the market chain-free and is in the gated and prestigious Cyclops Wharf development. The property is in good condition throughout, with a separate kitchen and four bedrooms split over three floors. The current owners have owned the property for a substantial amount of time and have maintained the condition throughout, making this a perfect family home with a parking space at the front. The complex also benefits from a recently refurbished swimming pool, full gymnasium, and 24-hour concierge service. Cyclops Mews is convenient for enjoying the nearby river and is close to local shops and amenities. Mudchute DLR station is within walking distance and provides fast access to Canary Wharf and the Elizabeth and Jubilee Lines. Please note, we have been informed by our vendor that there is a service charge is around 3000K PA.

Borough: Tower Hamlets* Council Tax: E* EPC: E

Nearest Station: Mudchute (0.42 miles) Material Information: www.alexneil.com/material-information



Approximate gross internal area
110.12 sq m / 1185.32 sq ft



Canary Wharf & Docklands Office
2 Westferry Road, Canary Wharf, London E14 8JT

t: 020 7537 9859 e: canarywharf@alexneil.com

Disclaimer: Property descriptions are subjective and used in good faith as an opinion rather than statements of fact. The owner provided information relating to title, tenure, service charges and ground rent information. Therefore, please make specific enquiries to ensure that our descriptions match your expectations of the property. Floor plan measurements are approximate and for illustrative purposes only. Furthermore, we have not tested any services, systems or appliances at this property. And we strongly recommend that you verify all the provided information on inspection and that your surveyor and conveyancer further confirm details. Also, market conditions and property values regularly fluctuate. And showcased sold properties demonstrate our previous successes rather than indicate live property values. *As advised by the owner. **Property sold subject to contract.

ALEX NEIL

ESTATE AGENTS SINCE 1984

2024 signifies our **40th Anniversary**, and we are immensely proud to have reached this impressive longevity milestone. In celebration, we launched an **exceptional promotion** for sellers, affording them increased marketing exposure for free!

40 years of expertise: With four decades of experience, we bring a wealth of knowledge and expertise. Our durability is a testament to the trust satisfied clients place in us. We understand the nuances of the diverse neighbourhoods we cover. Our local expertise allows us to provide tailored solutions, whether you're buying or selling, allowing you to move with confidence.



ALEX NEIL

ESTATE AGENTS SINCE 1984

www.alexneil.com