



QUEEN OF DENMARK COURT SE16  
**3 bedroom duplex apartment**

**£750,000**  
LEASEHOLD

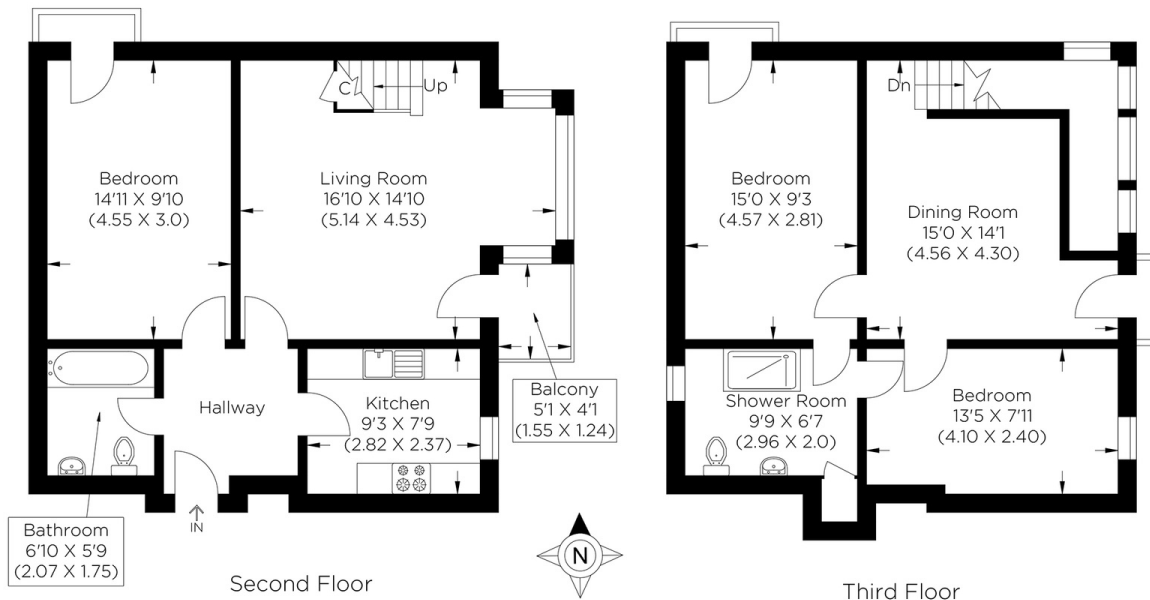


# QUEEN OF DENMARK COURT SE16

This rare to-the-market three-bedroom duplex apartment is in the iconic Queen of Denmark Court development, Surrey Quays SE16. This stunning property boasts exceptionally spacious living space and breathtaking views over the River Thames and Canary Wharf. The property comprises a separate fitted kitchen, a large dining room with double-height ceilings, a large private balcony, three double bedrooms and two modern family bathrooms. The apartment further benefits from an additional living room on the first-floor mezzanine and ample storage. There is a communal roof terrace and a secure underground car park. Developers meticulously designed every aspect of the property to offer the best and most comfortable living. This incredible development is also well known for its outstanding internal components and the peacefulness of the landscaped communal garden. We highly recommend this property!

Borough: Southwark\* Council Tax: E\* EPC: C Lease Term: TBA Service Charge: £5,470\* Ground Rent: £338\*

Nearest Station: Surrey Quays (0.67 miles) Material Information: [www.alexneil.com/material-information](http://www.alexneil.com/material-information)



Approximate gross internal area  
94.50 sq m / 1017.19 sq ft

**Rotherhithe & Bermondsey Office**  
146 Lower Road, London SE16 2UG

t: 020 7237 6767 e: [rotherhithe@alexneil.com](mailto:rotherhithe@alexneil.com)

Disclaimer: Property descriptions are subjective and used in good faith as an opinion rather than statements of fact. The owner provided information relating to title, tenure, service charges and ground rent information. Therefore, please make specific enquiries to ensure that our descriptions match your expectations of the property. Floor plan measurements are approximate and for illustrative purposes only. Furthermore, we have not tested any services, systems or appliances at this property. And we strongly recommend that you verify all the provided information on inspection and that your surveyor and conveyancer further confirm details. Also, market conditions and property values regularly fluctuate. And showcased sold properties demonstrate our previous successes rather than indicate live property values. \*As advised by the owner. \*\*Property sold subject to contract.



# ALEX NEIL

ESTATE AGENTS SINCE 1984

2024 signifies our **40th Anniversary**, and we are immensely proud to have reached this impressive longevity milestone. In celebration, we launched an **exceptional promotion** for sellers, affording them increased marketing exposure for free!

**40 years of expertise:** With four decades of experience, we bring a wealth of knowledge and expertise. Our durability is a testament to the trust satisfied clients place in us. We understand the nuances of the diverse neighbourhoods we cover. Our local expertise allows us to provide tailored solutions, whether you're buying or selling, allowing you to move with confidence.



ALEX NEIL

ESTATE AGENTS SINCE 1984

[www.alexneil.com](http://www.alexneil.com)