



SILWOOD STREET SE16  
**1 bedroom apartment**

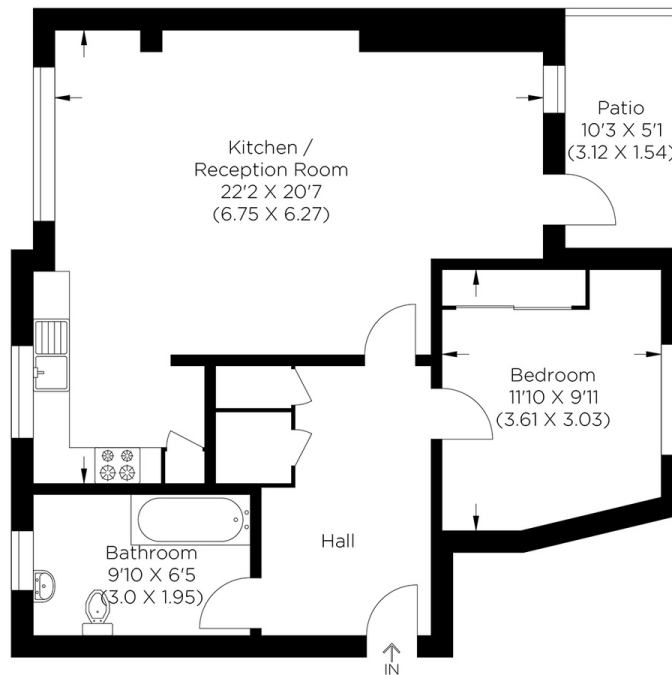
**£350,000**  
LEASEHOLD



# SILWOOD STREET SE16

We present an immaculate one-bedroom apartment on desirable Silwood Street, South Bermondsey SE16. The property is part of the recently completed residential development. It comprises a large open-plan living room with a smartly fitted kitchen with fully integrated appliances, a generous bedroom with a fitted wardrobe and a contemporary bathroom. A large private balcony provides a great space to dine al fresco and enjoy views over the inner courtyard. Other features include ample storage, double glazing, cycle storage and wooden flooring. Silwood Street is within a short walk from Surrey Quays and Canada Water stations, which benefits from access to the Jubilee line (only one stop to Canary Wharf and two stops to London Bridge) and also the London Overground service (direct links to Highbury & Islington via Shoreditch High Street near Liverpool Street). This fantastic property is ideal for easy access to all of London. Viewing is highly recommended.

Borough: Lewisham\* Council Tax: C\* EPC: C Lease Term: 113 years\* Service Charge: £3,135\* Ground Rent: £100\*  
Nearest Station: South Bermondsey (0.27 miles) Material Information: [www.alexneil.com/material-information](http://www.alexneil.com/material-information)



Approximate gross internal area  
61.20 sq m / 658.75 sq ft



**Rotherhithe & Bermondsey Office**  
146 Lower Road, London SE16 2UG

t: 020 7237 6767 e: [rotherhithe@alexneil.com](mailto:rotherhithe@alexneil.com)

Disclaimer: Property descriptions are subjective and used in good faith as an opinion rather than statements of fact. The owner provided information relating to title, tenure, service charges and ground rent information. Therefore, please make specific enquiries to ensure that our descriptions match your expectations of the property. Floor plan measurements are approximate and for illustrative purposes only. Furthermore, we have not tested any services, systems or appliances at this property. And we strongly recommend that you verify all the provided information on inspection and that your surveyor and conveyancer further confirm details. Also, market conditions and property values regularly fluctuate. And showcased sold properties demonstrate our previous successes rather than indicate live property values. \*As advised by the owner. \*\*Property sold subject to contract.

# ALEX NEIL

ESTATE AGENTS SINCE 1984

2024 signifies our **40th Anniversary**, and we are immensely proud to have reached this impressive longevity milestone. In celebration, we launched an **exceptional promotion** for sellers, affording them increased marketing exposure for free!

**40 years of expertise:** With four decades of experience, we bring a wealth of knowledge and expertise. Our durability is a testament to the trust satisfied clients place in us. We understand the nuances of the diverse neighbourhoods we cover. Our local expertise allows us to provide tailored solutions, whether you're buying or selling, allowing you to move with confidence.



ALEX NEIL

ESTATE AGENTS SINCE 1984

[www.alexneil.com](http://www.alexneil.com)