



THOMAS ROAD E14  
**2 bedroom apartment**

**£535,000**  
SOLD STC\*\*



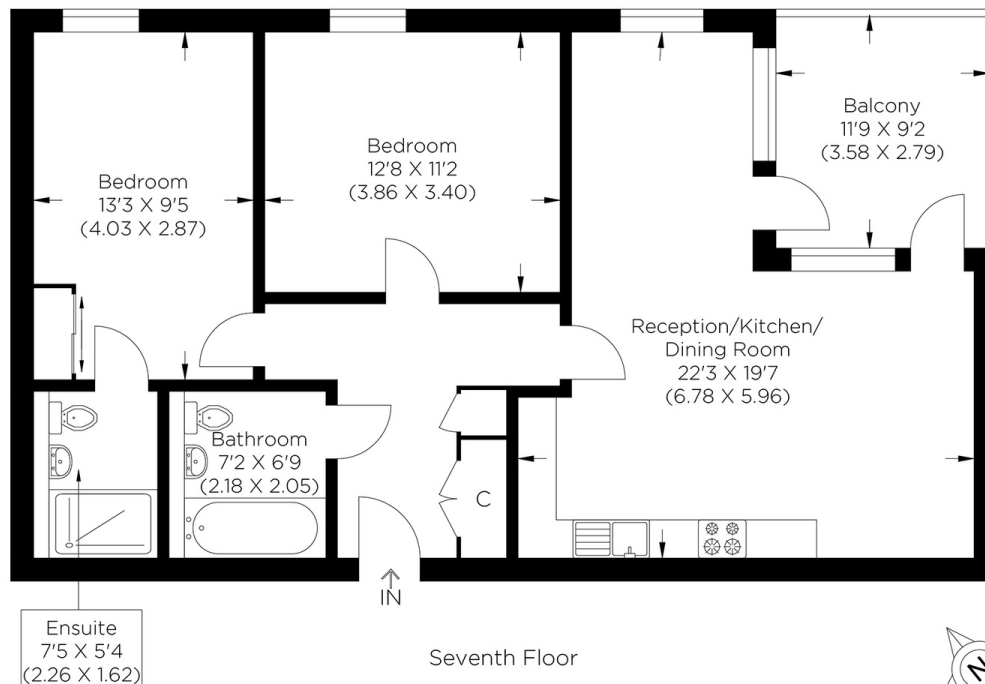


# THOMAS ROAD E14

Revered Explorers Wharf is a stunning waterside development on Thomas Road, Poplar E14, beside the Limehouse Cut canal. The development is in a perfect location for the UK's financial district, including communal gardens, a gym and a concierge. Due to its prime location, there are excellent travel links to the City and beyond. This seventh-floor, top-floor apartment has impeccable Canary Wharf views, and the building provides easy access to the surrounding canals. This rarely available property displays an exquisite standard throughout, creating a fantastic family home perfect for first-time buyers or buyers looking to upsize. The current owners have meticulously crafted the open-plan living space to accommodate working from home, an eating area, a relaxation space, and a fully equipped kitchen area. The two bedrooms are double size, and there are two bathrooms, one of which is an en-suite. This fantastic apartment has ample storage and boasts integrated appliances.

Borough: Tower Hamlets\* Council Tax: D\* EPC: B Lease Term: 993 years\* Service Charge: £2,800\* Ground Rent: £300\*

Nearest Station: Westferry (0.39 miles) Material Information: [www.alexneil.com/material-information](http://www.alexneil.com/material-information)



Approximate gross internal area  
75.44 sq m / 812.02 sq ft



**Canary Wharf & Docklands Office**  
2 Westferry Road, Canary Wharf, London E14 8JT

t: 020 7537 9859 e: [canarywharf@alexneil.com](mailto:canarywharf@alexneil.com)

Disclaimer: Property descriptions are subjective and used in good faith as an opinion rather than statements of fact. The owner provided information relating to title, tenure, service charges and ground rent information. Therefore, please make specific enquiries to ensure that our descriptions match your expectations of the property. Floor plan measurements are approximate and for illustrative purposes only. Furthermore, we have not tested any services, systems or appliances at this property. And we strongly recommend that you verify all the provided information on inspection and that your surveyor and conveyancer further confirm details. Also, market conditions and property values regularly fluctuate. And showcased sold properties demonstrate our previous successes rather than indicate live property values. \*As advised by the owner. \*\*Property sold subject to contract.

# ALEX NEIL

ESTATE AGENTS SINCE 1984

2024 signifies our **40th Anniversary**, and we are immensely proud to have reached this impressive longevity milestone. In celebration, we launched an **exceptional promotion** for sellers, affording them increased marketing exposure for free!

**40 years of expertise:** With four decades of experience, we bring a wealth of knowledge and expertise. Our durability is a testament to the trust satisfied clients place in us. We understand the nuances of the diverse neighbourhoods we cover. Our local expertise allows us to provide tailored solutions, whether you're buying or selling, allowing you to move with confidence.



ALEX NEIL

ESTATE AGENTS SINCE 1984

[www.alexneil.com](http://www.alexneil.com)