



NOVA BUILDING E14
2 bedroom apartment

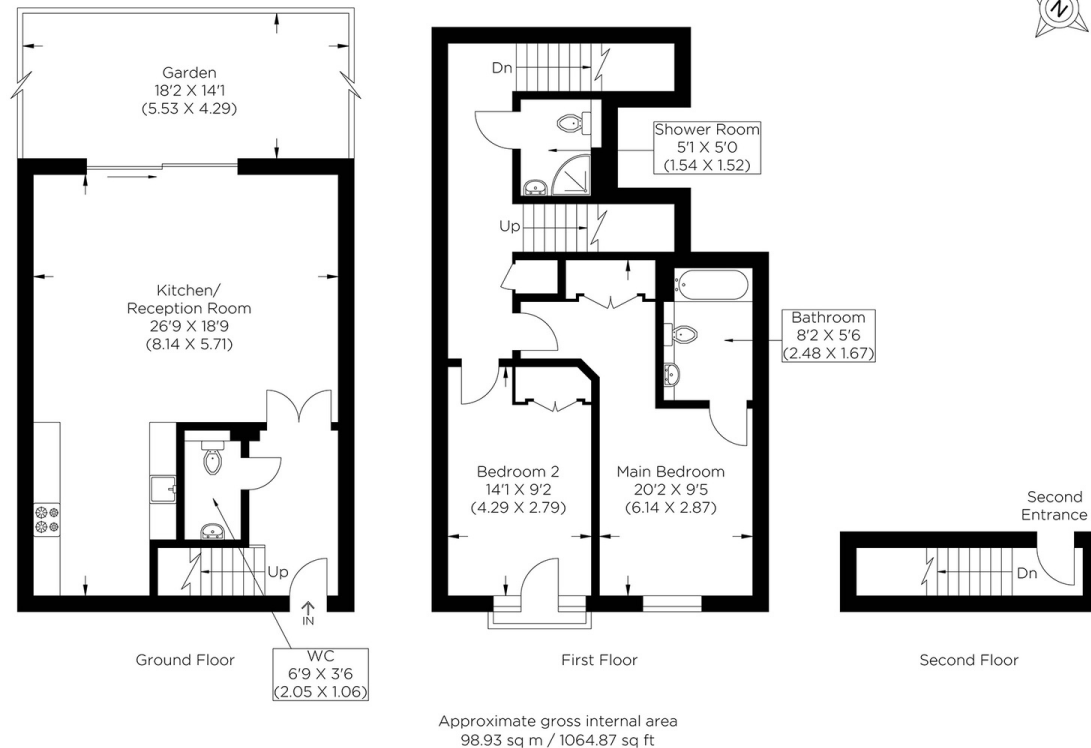
£575,000
LEASEHOLD



NOVA BUILDING E14

We present a stunning two double-bedroom duplex apartment in The Odyssey, Nova Building, Newton Place, Isle of Dogs E14. This apartment has charming river views. The accommodation comprises a large hallway, guest toilet, and spacious open-plan living space boasting a stylish integrated kitchen. A south-facing private terrace overlooks the River Thames, with far-reaching views. Up the stairs, on the second floor, it comprises a main bedroom with en-suite and built-in wardrobes, and the Juliet-style balcony plenty of light in to the bedroom. There is a separate shower suite and a generously sized second bedroom with fitted wardrobes. Residents of the Odyssey development enjoy a secure entry system, porter, lift facilities, gymnasium and an allocated parking space. The Nova Building is ideal for swift access into Canary Wharf and central London, with Mudchute DLR just a short walk away.

Borough: Tower Hamlets* Council Tax: F* EPC: C Lease Term: 101 years* Service Charge: £6,000* Ground Rent: £430*
Nearest Station: Mudchute (0.51 miles) Material Information: www.alexneil.com/material-information



Canary Wharf & Docklands Office
2 Westferry Road, Canary Wharf, London E14 8JT

t: 020 7537 9859 e: canarywharf@alexneil.com

Disclaimer: Property descriptions are subjective and used in good faith as an opinion rather than statements of fact. The owner provided information relating to title, tenure, service charges and ground rent information. Therefore, please make specific enquiries to ensure that our descriptions match your expectations of the property. Floor plan measurements are approximate and for illustrative purposes only. Furthermore, we have not tested any services, systems or appliances at this property. And we strongly recommend that you verify all the provided information on inspection and that your surveyor and conveyancer further confirm details. Also, market conditions and property values regularly fluctuate. And showcased sold properties demonstrate our previous successes rather than indicate live property values. *As advised by the owner. **Property sold subject to contract.

ALEX NEIL

ESTATE AGENTS SINCE 1984

2024 signifies our **40th Anniversary**, and we are immensely proud to have reached this impressive longevity milestone. In celebration, we launched an **exceptional promotion** for sellers, affording them increased marketing exposure for free!

40 years of expertise: With four decades of experience, we bring a wealth of knowledge and expertise. Our durability is a testament to the trust satisfied clients place in us. We understand the nuances of the diverse neighbourhoods we cover. Our local expertise allows us to provide tailored solutions, whether you're buying or selling, allowing you to move with confidence.



ALEX NEIL

ESTATE AGENTS SINCE 1984

www.alexneil.com