



QUAY VIEW APARTMENTS E14
2 bedroom apartment

£475,000

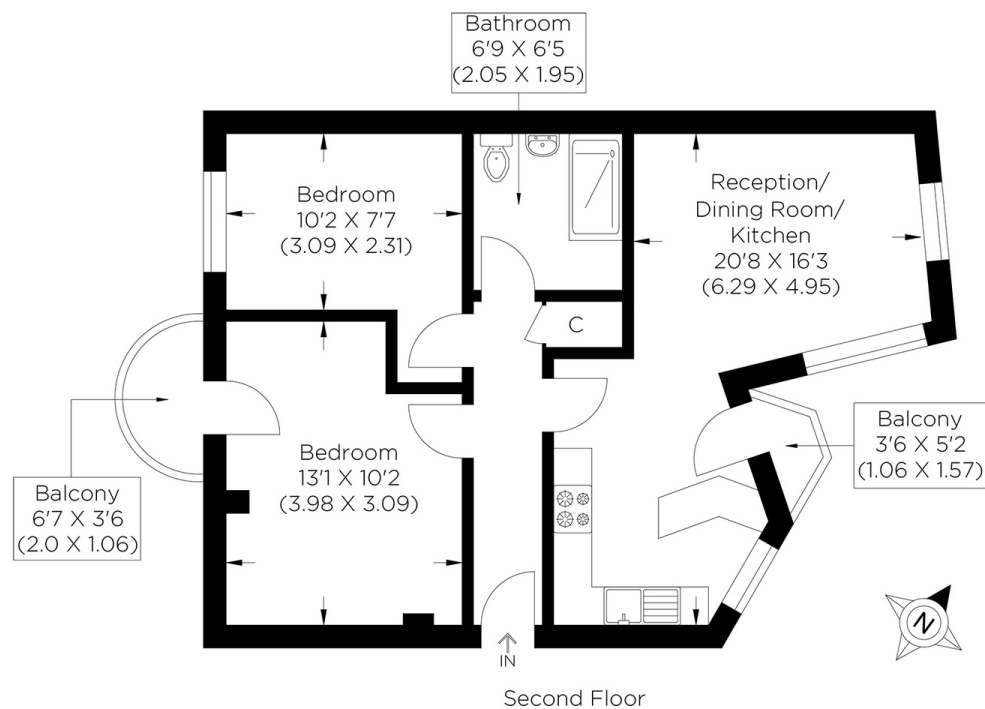
SHARE OF
FREEHOLD



QUAY VIEW APARTMENTS E14

With stunning views directly from the living space, this is the perfect opportunity to make this your home, set within Quay View Apartments, Arden Crescent, Isle of Dogs E14. The well-presented apartment includes off-street parking in a quiet waterside neighbourhood next to Millwall Outer Dock, a stroll from the Thames. The accommodation comprises a spacious living room featuring wood flooring leading to a balcony overlooking the dock and Canary Wharf, a kitchen, including a breakfast bar, an integrated oven, hob and dishwasher. Furthermore, there are two well-proportioned bedrooms with ample storage, the master bedroom is complimented by a second balcony. The nearest station is Mudchute DLR, a 9-min walk away for quick journeys to Canary Wharf's shops, restaurants and the Jubilee and Elizabeth lines for more extensive London travel.

Borough: Tower Hamlets* Council Tax: E* EPC: D Lease Term: 96 years* Service Charge: £1,882* Ground Rent: TBA
Nearest Station: Mudchute (0.38 miles) Material Information: www.alexneil.com/material-information



Approximate gross internal area
50.08 sq m / 539.05 sq ft

Canary Wharf & Docklands Office
2 Westferry Road, Canary Wharf, London E14 8JT

t: 020 7537 9859 e: canarywharf@alexneil.com

Disclaimer: Property descriptions are subjective and used in good faith as an opinion rather than statements of fact. The owner provided information relating to title, tenure, service charges and ground rent information. Therefore, please make specific enquiries to ensure that our descriptions match your expectations of the property. Floor plan measurements are approximate and for illustrative purposes only. Furthermore, we have not tested any services, systems or appliances at this property. And we strongly recommend that you verify all the provided information on inspection and that your surveyor and conveyancer further confirm details. Also, market conditions and property values regularly fluctuate. And showcased sold properties demonstrate our previous successes rather than indicate live property values. *As advised by the owner. **Property sold subject to contract.



ALEX NEIL

ESTATE AGENTS SINCE 1984

2024 signifies our **40th Anniversary**, and we are immensely proud to have reached this impressive longevity milestone. In celebration, we launched an **exceptional promotion** for sellers, affording them increased marketing exposure for free!

40 years of expertise: With four decades of experience, we bring a wealth of knowledge and expertise. Our durability is a testament to the trust satisfied clients place in us. We understand the nuances of the diverse neighbourhoods we cover. Our local expertise allows us to provide tailored solutions, whether you're buying or selling, allowing you to move with confidence.



ALEX NEIL

ESTATE AGENTS SINCE 1984

www.alexneil.com