



THEATRO TOWER SE8  
**3 bedroom duplex apartment**

**£550,000+**  
LEASEHOLD

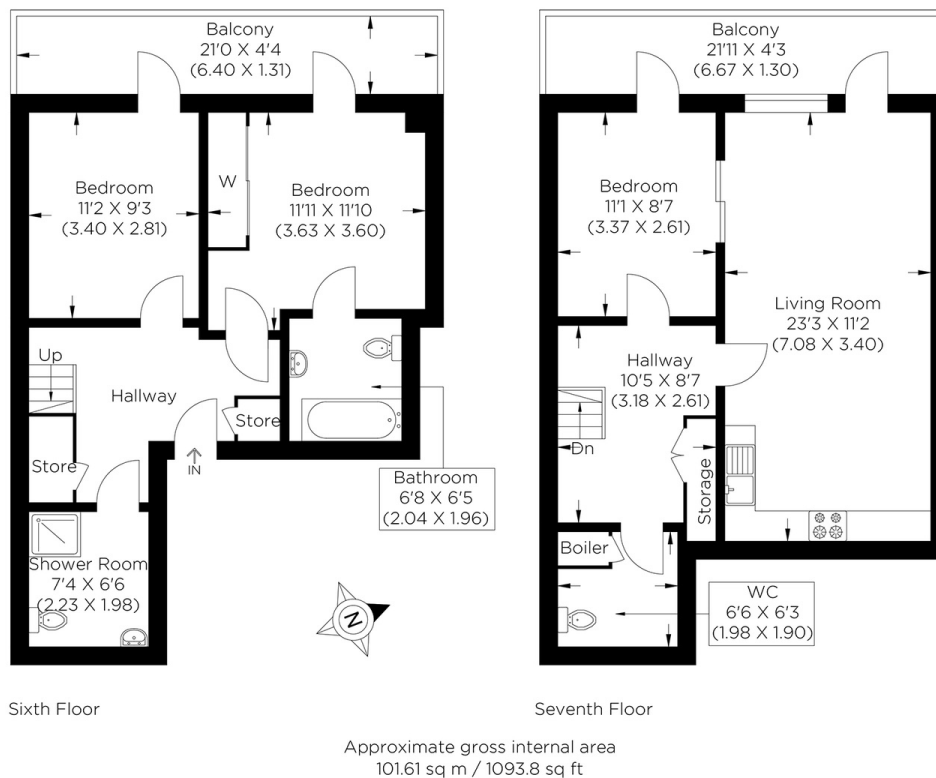




# THEATRO TOWER SE8

This substantial three-bedroom duplex apartment is the desirable development of Theatro Tower, Creek Road, Deptford SE8. The apartment is modern and neutrally decorated throughout. The accommodation comprises a large open-plan kitchen and dining room with access to a private terrace offering stunning views, three double bedrooms, the main bedroom with an en-suite shower room, a modern family bathroom, an additional shower room, and abundant storage. Theatro Tower has concierge services and is ideal for accessing characterful Greenwich, where you can enjoy a diverse array of independent retailers and some fantastic spots for drinks with friends. The excellent local transport links include Cutty Sark and Greenwich DLR rail stations and the Greenwich Foot Tunnel. When you choose not to cook, you could head to The Duke for a sublime pizza or the Arapina Bakery in the morning for a pastry.

Borough: Royal Greenwich\* Council Tax: C\* EPC: TBA Lease Term: 112 years\* Service Charge: TBA Ground Rent: TBA  
Nearest Station: Deptford (0.21 miles) Material Information: [www.alexneil.com/material-information](http://www.alexneil.com/material-information)



**Rotherhithe & Bermondsey Office**  
146 Lower Road, London SE16 2UG

t: 020 7237 6767 e: [rotherhithe@alexneil.com](mailto:rotherhithe@alexneil.com)

Disclaimer: Property descriptions are subjective and used in good faith as an opinion rather than statements of fact. The owner provided information relating to title, tenure, service charges and ground rent information. Therefore, please make specific enquiries to ensure that our descriptions match your expectations of the property. Floor plan measurements are approximate and for illustrative purposes only. Furthermore, we have not tested any services, systems or appliances at this property. And we strongly recommend that you verify all the provided information on inspection and that your surveyor and conveyancer further confirm details. Also, market conditions and property values regularly fluctuate. And showcased sold properties demonstrate our previous successes rather than indicate live property values. \*As advised by the owner. \*\*Property sold subject to contract.



## ALEX NEIL

ESTATE AGENTS SINCE 1984

2024 signifies our **40th Anniversary**, and we are immensely proud to have reached this impressive longevity milestone. In celebration, we launched an **exceptional promotion** for sellers, affording them increased marketing exposure for free!

**40 years of expertise:** With four decades of experience, we bring a wealth of knowledge and expertise. Our durability is a testament to the trust satisfied clients place in us. We understand the nuances of the diverse neighbourhoods we cover. Our local expertise allows us to provide tailored solutions, whether you're buying or selling, allowing you to move with confidence.



ALEX NEIL

ESTATE AGENTS SINCE 1984

[www.alexneil.com](http://www.alexneil.com)