



LANGBOURNE PLACE E14  
**2 bedroom apartment**

**£600,000**  
LEASEHOLD

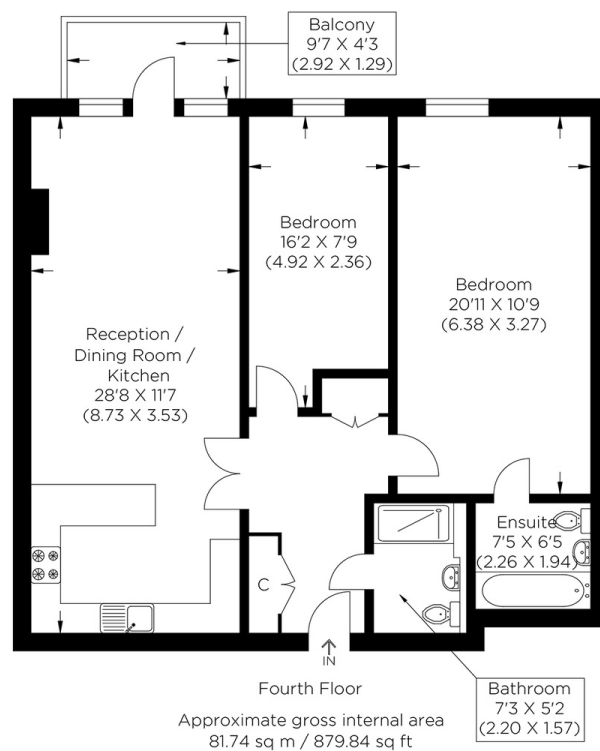




# LANGBOURNE PLACE E14

This breathtaking two-double-bedroom apartment showcases direct river views and resides within the highly sought-after Langbourne Place development in the prestigious Isle of Dogs, E14. Internally, the property encompasses approximately 900 sqft of living space, featuring a generously sized open plan kitchen/reception room adorned with floor-to-ceiling windows, granting access to an exceptional larger-than-average sized private balcony. Additionally, the apartment offers a fully integrated kitchen, a luxurious main bedroom complete with a stylish en-suite bathroom, a second bedroom, and a four-piece family bathroom suite. Langbourne Place is a securely gated development ideally positioned amidst various shops, restaurants, and bars, conveniently close to the Greenwich Foot Tunnel. Island Gardens DLR station is mere moments away, facilitating effortless connections to Canary Wharf and Bank station.

Borough: Tower Hamlets\* Council Tax: E\* EPC: B Lease Term: 164 years\* Service Charge: £5,664\* Ground Rent: £200\*  
Nearest Station: Island Gardens (0.29 miles) Material Information: [www.alexneil.com/material-information](http://www.alexneil.com/material-information)



**Canary Wharf & Docklands Office**  
**2 Westferry Road, Canary Wharf, London E14 8JT**

**t: 020 7537 9859 e: [canarywharf@alexneil.com](mailto:canarywharf@alexneil.com)**

Disclaimer: Property descriptions are subjective and used in good faith as an opinion rather than statements of fact. The owner provided information relating to title, tenure, service charges and ground rent information. Therefore, please make specific enquiries to ensure that our descriptions match your expectations of the property. Floor plan measurements are approximate and for illustrative purposes only. Furthermore, we have not tested any services, systems or appliances at this property. And we strongly recommend that you verify all the provided information on inspection and that your surveyor and conveyancer further confirm details. Also, market conditions and property values regularly fluctuate. And showcased sold properties demonstrate our previous successes rather than indicate live property values. \*As advised by the owner. \*\*Property sold subject to contract.

## ALEX NEIL

ESTATE AGENTS SINCE 1984

2024 signifies our **40th Anniversary**, and we are immensely proud to have reached this impressive longevity milestone. In celebration, we launched an **exceptional promotion** for sellers, affording them increased marketing exposure for free!

**40 years of expertise:** With four decades of experience, we bring a wealth of knowledge and expertise. Our durability is a testament to the trust satisfied clients place in us. We understand the nuances of the diverse neighbourhoods we cover. Our local expertise allows us to provide tailored solutions, whether you're buying or selling, allowing you to move with confidence.



ALEX NEIL

ESTATE AGENTS SINCE 1984

[www.alexneil.com](http://www.alexneil.com)