



WHITEMANTLE COURT E3  
**2 bedroom apartment**

**£650,000**  
SOLD STC\*\*

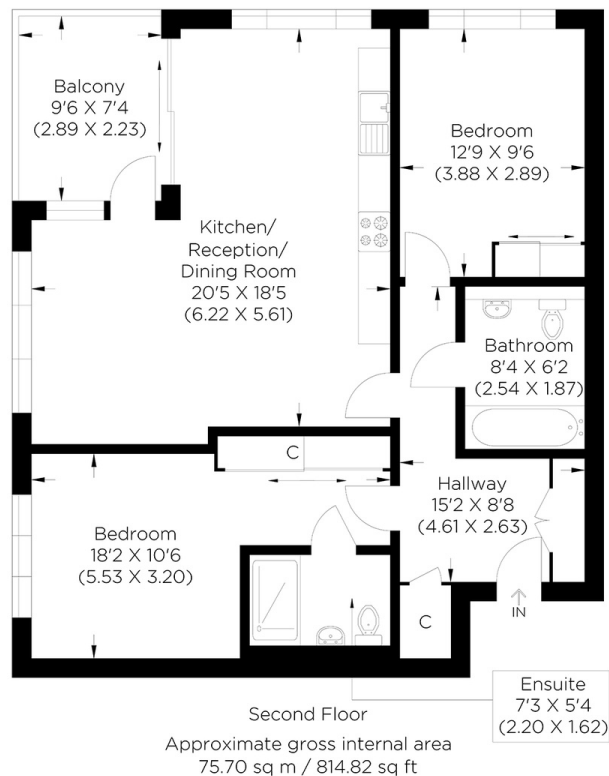




# WHITEMANTLE COURT E3

This exceptional two double-bedroom apartment with spectacular canal views is in Whitemantle Court, Rookwood Way, Bow E3. Part of Fish Island Village, the apartment's intelligent layout enables the living areas and balcony to maximise the canal aspect with generous triple-glazed windows, allowing plenty of natural light. The accommodation comprises a spacious open plan-style kitchen/living/dining room. There are two double bedrooms with en-suite to master, a family bathroom and two double storage cupboards in the hallway. The award-winning Fish Island Village is perfect for those looking to live in a community between Victoria Park and the Olympic Park. Locally, you have abundant independent coffee shops, bars and restaurants, and outstanding schools and nurseries. Hackney Wick Station overground station is just a short walk over the canal. Stratford is a 20-minute walk through the Olympic Park with Westfield Shopping Centre and Stratford International, giving quick city access.

Borough: Tower Hamlets\* Council Tax: D\* EPC: B Lease Term: 244 years\* Service Charge: £2,900\* Ground Rent: £360\*  
Nearest Station: Hackney Wick (0.19 miles) Material Information: [www.alexneil.com/material-information](http://www.alexneil.com/material-information)



**Canary Wharf & Docklands Office**  
**2 Westferry Road, Canary Wharf, London E14 8JT**

**t: 020 7537 9859 e: [canarywharf@alexneil.com](mailto:canarywharf@alexneil.com)**

Disclaimer: Property descriptions are subjective and used in good faith as an opinion rather than statements of fact. The owner provided information relating to title, tenure, service charges and ground rent information. Therefore, please make specific enquiries to ensure that our descriptions match your expectations of the property. Floor plan measurements are approximate and for illustrative purposes only. Furthermore, we have not tested any services, systems or appliances at this property. And we strongly recommend that you verify all the provided information on inspection and that your surveyor and conveyancer further confirm details. Also, market conditions and property values regularly fluctuate. And showcased sold properties demonstrate our previous successes rather than indicate live property values. \*As advised by the owner. \*\*Property sold subject to contract.

## ALEX NEIL

ESTATE AGENTS SINCE 1984

2024 signifies our **40th Anniversary**, and we are immensely proud to have reached this impressive longevity milestone. In celebration, we launched an **exceptional promotion** for sellers, affording them increased marketing exposure for free!

**40 years of expertise:** With four decades of experience, we bring a wealth of knowledge and expertise. Our durability is a testament to the trust satisfied clients place in us. We understand the nuances of the diverse neighbourhoods we cover. Our local expertise allows us to provide tailored solutions, whether you're buying or selling, allowing you to move with confidence.



ALEX NEIL

ESTATE AGENTS SINCE 1984

[www.alexneil.com](http://www.alexneil.com)