



POSEIDON COURT E14
1 bedroom apartment

£475,000

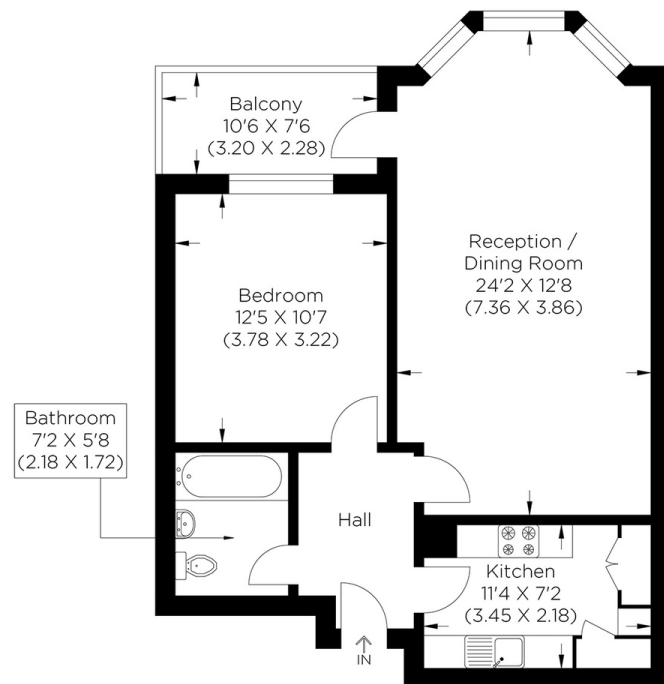
SHARE OF
FREEHOLD



POSEIDON COURT E14

We present an exceptional one-bedroom apartment in Poseidon Court, Homer Drive, Isle of Dogs E14. With its magnificent vistas overlooking the river and towards the London Skyline, this apartment's meticulous refurbishment is of superior standard and boasts a larger-than-average balcony. In addition to secure off-street parking, the apartment is share of freehold, offers exclusive access to a residents' gym, swimming pool, jacuzzi, and a 24-hour concierge service within the tranquil Cyclops Wharf gated development. Nestled on Homer Drive, a highly sought-after residential area, it enjoys close proximity to Canary Wharf's exceptional array of shops, bars, and restaurants. Mudchute DLR station lies nearby, providing convenient links to the City and Canary Wharf. The latter has an Elizabeth Line and Jubilee Line station. Furthermore, a ferry service in the vicinity offers direct connections to Greenwich and Embankment.

Borough: Tower Hamlets* Council Tax: E* EPC: B Lease Term: 994 years* Service Charge: £5,426* Ground Rent: TBA
Nearest Station: Mudchute (0.45 miles) Material Information: www.alexneil.com/material-information



Fourth Floor

Approximate gross internal area
56.86 sq m / 612.03 sq ft



Canary Wharf & Docklands Office
2 Westferry Road, Canary Wharf, London E14 8JT

t: 020 7537 9859 e: canarywharf@alexneil.com

Disclaimer: Property descriptions are subjective and used in good faith as an opinion rather than statements of fact. The owner provided information relating to title, tenure, service charges and ground rent information. Therefore, please make specific enquiries to ensure that our descriptions match your expectations of the property. Floor plan measurements are approximate and for illustrative purposes only. Furthermore, we have not tested any services, systems or appliances at this property. And we strongly recommend that you verify all the provided information on inspection and that your surveyor and conveyancer further confirm details. Also, market conditions and property values regularly fluctuate. And showcased sold properties demonstrate our previous successes rather than indicate live property values. *As advised by the owner. **Property sold subject to contract.

ALEX NEIL

ESTATE AGENTS SINCE 1984

2024 signifies our **40th Anniversary**, and we are immensely proud to have reached this impressive longevity milestone. In celebration, we launched an **exceptional promotion** for sellers, affording them increased marketing exposure for free!

40 years of expertise: With four decades of experience, we bring a wealth of knowledge and expertise. Our durability is a testament to the trust satisfied clients place in us. We understand the nuances of the diverse neighbourhoods we cover. Our local expertise allows us to provide tailored solutions, whether you're buying or selling, allowing you to move with confidence.



ALEX NEIL

ESTATE AGENTS SINCE 1984

www.alexneil.com