



JADE CLOSE E16

**3 bedroom terraced house**

**£450,000**

FREEHOLD



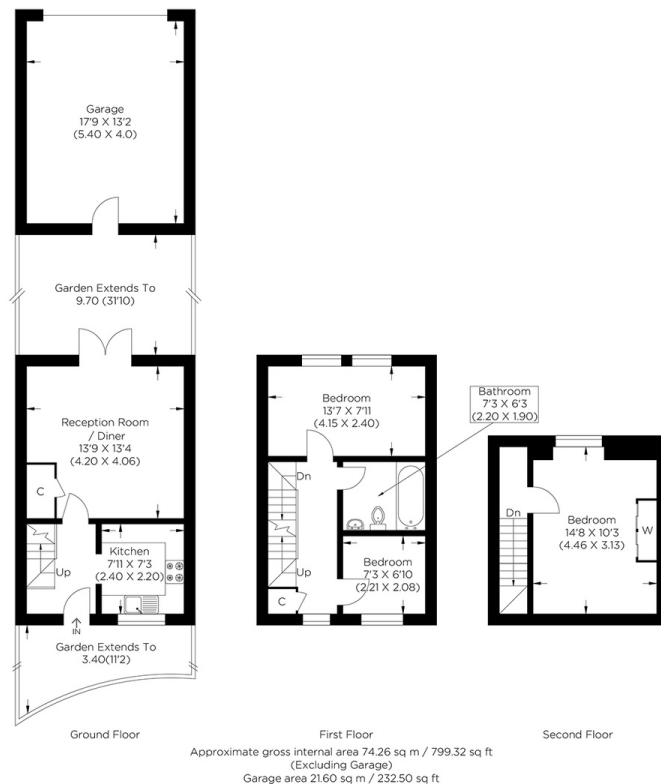


# JADE CLOSE E16

We present this impeccably maintained three-bedroom house, nestled within the serene enclave of Jade Close in Beckton District Park, Newham E16. The accommodation is spread across three floors, offering abundant living space. The property boasts a recently modernized kitchen, distinct from the exquisitely adorned living area, which leads to a generously proportioned garden. The first and second floors feature three spacious bedrooms with ample storage options. Convenient access to the modern three-piece family bathroom is on the first floor. Additionally, the house includes a generously sized garage and a meticulously kept garden, and this property is chain-free. Jade Close enjoys a tranquil residential setting, just a brief walk from the Royal Albert DLR station, adjacent to the Asian Business Port and Custom House. You can easily access Canary Wharf and the City with swift DLR and Elizabeth Line connections.

Borough: Newham\* Council Tax: D\* EPC: C

Nearest Station: Royal Albert (0.29 miles) Material Information: [www.alexneil.com/material-information](http://www.alexneil.com/material-information)



**Canary Wharf & Docklands Office**  
2 Westferry Road, Canary Wharf, London E14 8JT

t: 020 7537 9859 e: [canarywharf@alexneil.com](mailto:canarywharf@alexneil.com)

Disclaimer: Property descriptions are subjective and used in good faith as an opinion rather than statements of fact. The owner provided information relating to title, tenure, service charges and ground rent information. Therefore, please make specific enquiries to ensure that our descriptions match your expectations of the property. Floor plan measurements are approximate and for illustrative purposes only. Furthermore, we have not tested any services, systems or appliances at this property. And we strongly recommend that you verify all the provided information on inspection and that your surveyor and conveyancer further confirm details. Also, market conditions and property values regularly fluctuate. And showcased sold properties demonstrate our previous successes rather than indicate live property values. \*As advised by the owner. \*\*Property sold subject to contract.

# ALEX NEIL

ESTATE AGENTS SINCE 1984

2024 signifies our **40th Anniversary**, and we are immensely proud to have reached this impressive longevity milestone. In celebration, we launched an **exceptional promotion** for sellers, affording them increased marketing exposure for free!

**40 years of expertise:** With four decades of experience, we bring a wealth of knowledge and expertise. Our durability is a testament to the trust satisfied clients place in us. We understand the nuances of the diverse neighbourhoods we cover. Our local expertise allows us to provide tailored solutions, whether you're buying or selling, allowing you to move with confidence.



ALEX NEIL

ESTATE AGENTS SINCE 1984

[www.alexneil.com](http://www.alexneil.com)