



ST. DAVIDS SQUARE E14  
**2 bedroom apartment**

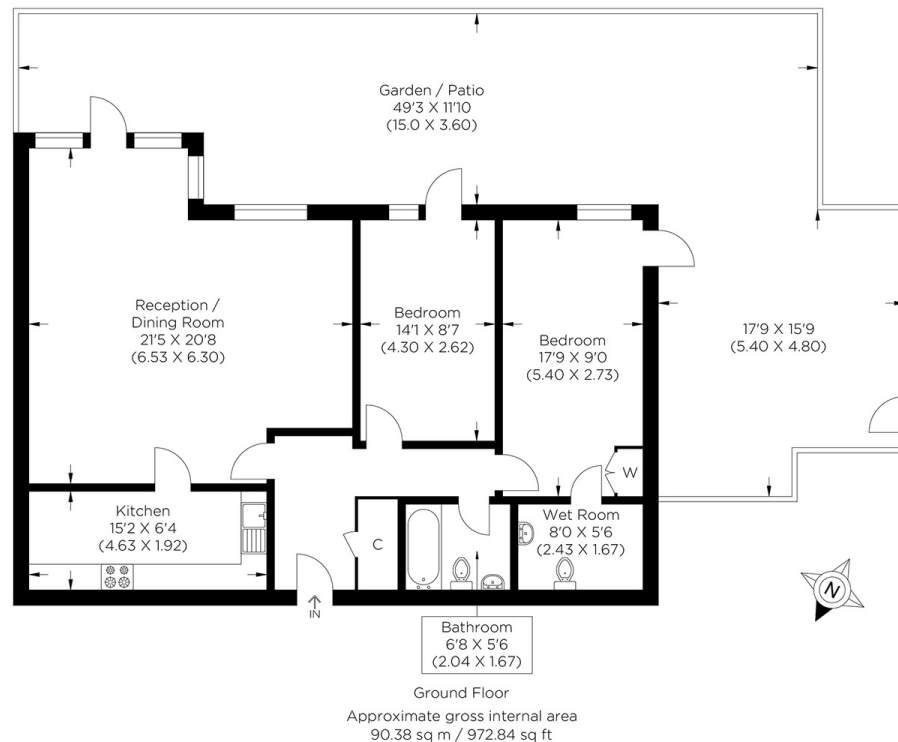
**£600,000**  
SOLD STC\*\*



# ST. DAVIDS SQUARE E14

Rarely available and offered to the market with no onward chain, a two-bedroom, two-bathroom apartment is situated on the ground floor of the highly sought-after St. Davids Square, Lockes Wharf, Isle of Dogs, E14. This property offers a luxurious lifestyle, boasting a twenty-four-hour concierge service, a residents-only gym and swimming pool, and secure allocated parking. The apartment is in excellent condition and spans over 850 square feet. The accommodation comprises two spacious double bedrooms, the main has en-suite, an extremely spacious and fully equipped kitchen, a separate reception room, and a spacious family bathroom. Additionally, there is a generously sized wrap-around terrace, perfect for dining and alfresco evenings. The apartment also benefits from a gated underground parking space. St. David's Square is ideal for easy access to Island Gardens Park and the DLR station. Canary Wharf and the City are easily accessible from this prime riverside location.

Borough: Tower Hamlets\* Council Tax: E\* EPC: D Lease Term: 970 years\* Service Charge: £5,200\* Ground Rent: £300\*  
Nearest Station: Island Gardens (0.21 miles) Material Information: [www.alexneil.com/material-information](http://www.alexneil.com/material-information)



**Canary Wharf & Docklands Office**  
2 Westferry Road, Canary Wharf, London E14 8JT

t: 020 7537 9859 e: [canarywharf@alexneil.com](mailto:canarywharf@alexneil.com)

Disclaimer: Property descriptions are subjective and used in good faith as an opinion rather than statements of fact. The owner provided information relating to title, tenure, service charges and ground rent information. Therefore, please make specific enquiries to ensure that our descriptions match your expectations of the property. Floor plan measurements are approximate and for illustrative purposes only. Furthermore, we have not tested any services, systems or appliances at this property. And we strongly recommend that you verify all the provided information on inspection and that your surveyor and conveyancer further confirm details. Also, market conditions and property values regularly fluctuate. And showcased sold properties demonstrate our previous successes rather than indicate live property values. \*As advised by the owner. \*\*Property sold subject to contract.

# ALEX NEIL

ESTATE AGENTS SINCE 1984

2024 signifies our **40th Anniversary**, and we are immensely proud to have reached this impressive longevity milestone. In celebration, we launched an **exceptional promotion** for sellers, affording them increased marketing exposure for free!

**40 years of expertise:** With four decades of experience, we bring a wealth of knowledge and expertise. Our durability is a testament to the trust satisfied clients place in us. We understand the nuances of the diverse neighbourhoods we cover. Our local expertise allows us to provide tailored solutions, whether you're buying or selling, allowing you to move with confidence.



ALEX NEIL

ESTATE AGENTS SINCE 1984

[www.alexneil.com](http://www.alexneil.com)