



MILLARD ROAD SE8  
**2 bedroom apartment**

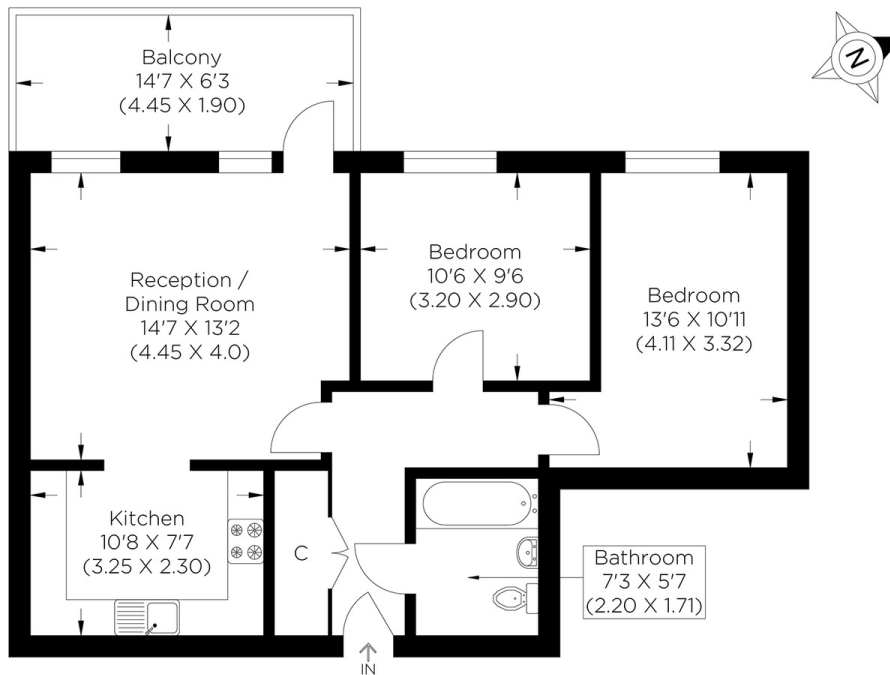
**£425,000**  
SOLD STC\*\*



# MILLARD ROAD SE8

Offered to the market is this fantastic two-bedroom apartment, set in a modern and quiet development on Millard Road, Deptford SE8. The property is on the second floor, and the accommodation comprises a bright and spacious lounge, a large open-plan kitchen with integrated appliances, two very well-proportioned bedrooms and a three-piece family bathroom. Additional benefits include a generous private balcony with aesthetic views over green open space and residents' parking. Millard Road's perfect location is convenient for Greenland Dock and South Dock Marina. Canary Wharf's cafes, bars, and restaurants are a short distance away via the river bus, which is also a great option for commuters who further benefit from excellent transport links at Canada Water and Surrey Quays. We highly recommend organising your appointment to view this home.

Borough: Lewisham\* Council Tax: C\* EPC: B Lease Term: 109 years\* Service Charge: £1,913\* Ground Rent: TBA  
Nearest Station: Deptford (0.64 miles) Material Information: [www.alexneil.com/material-information](http://www.alexneil.com/material-information)



Approximate gross internal area  
59.93 sq m / 645.08 sq ft



**Rotherhithe & Bermondsey Office**  
146 Lower Road, London SE16 2UG

t: 020 7237 6767 e: [rotherhithe@alexneil.com](mailto:rotherhithe@alexneil.com)

Disclaimer: Property descriptions are subjective and used in good faith as an opinion rather than statements of fact. The owner provided information relating to title, tenure, service charges and ground rent information. Therefore, please make specific enquiries to ensure that our descriptions match your expectations of the property. Floor plan measurements are approximate and for illustrative purposes only. Furthermore, we have not tested any services, systems or appliances at this property. And we strongly recommend that you verify all the provided information on inspection and that your surveyor and conveyancer further confirm details. Also, market conditions and property values regularly fluctuate. And showcased sold properties demonstrate our previous successes rather than indicate live property values. \*As advised by the owner. \*\*Property sold subject to contract.

# ALEX NEIL

ESTATE AGENTS SINCE 1984

2024 signifies our **40th Anniversary**, and we are immensely proud to have reached this impressive longevity milestone. In celebration, we launched an **exceptional promotion** for sellers, affording them increased marketing exposure for free!

**40 years of expertise:** With four decades of experience, we bring a wealth of knowledge and expertise. Our durability is a testament to the trust satisfied clients place in us. We understand the nuances of the diverse neighbourhoods we cover. Our local expertise allows us to provide tailored solutions, whether you're buying or selling, allowing you to move with confidence.



ALEX NEIL

ESTATE AGENTS SINCE 1984

[www.alexneil.com](http://www.alexneil.com)