



LONSDALE AVENUE E6
3 bedroom maisonette

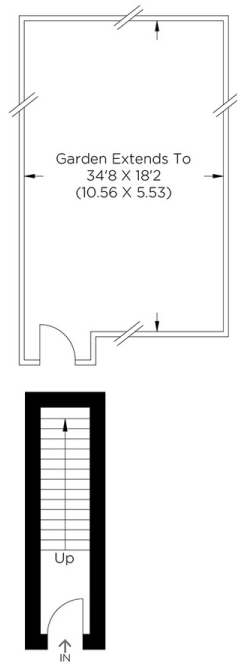
£350,000
SOLD STC**



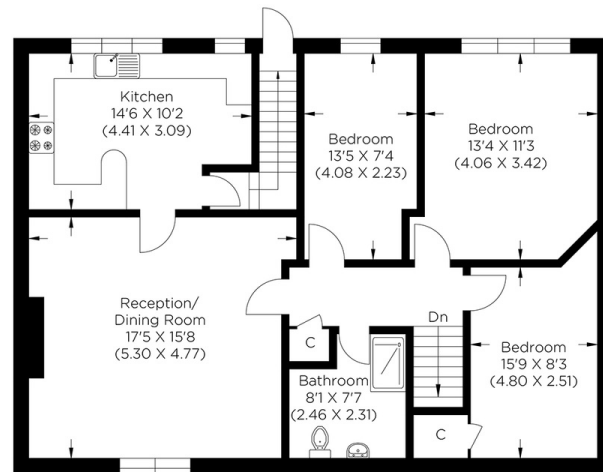
LONSDALE AVENUE E6

We are delighted to present a three-bedroom maisonette on Lonsdale Avenue, East Ham, E6. The property is on the first floor and benefits from a beautifully maintained private garden. The current owners have made this a stunning home to live by completing its refurbishment. There is a separate kitchen to the living space, three double bedrooms and a fully equipped refurbished bathroom. Nearby transport links include Beckton DLR station, which takes you to Canary Wharf (Jubilee Line/Elizabeth Line) or Canning Town, where you can catch the Jubilee Line. The A13 and A12 are close and give good access to London and the home counties. East Ham also has great primary and secondary schools that Lonsdale Avenue residents can access swiftly.

Borough: Newham* Council Tax: C* EPC: C Lease Term: 105 years* Service Charge: £635* Ground Rent: £10*
Nearest Station: Beckton (0.54 miles) Material Information: www.alexneil.com/material-information



Ground Floor



First Floor

Approximate gross internal area
94.51 sq m / 1017.29 sq ft

Canary Wharf & Docklands Office
2 Westferry Road, Canary Wharf, London E14 8JT

t: 020 7537 9859 e: canarywharf@alexneil.com

Disclaimer: Property descriptions are subjective and used in good faith as an opinion rather than statements of fact. The owner provided information relating to title, tenure, service charges and ground rent information. Therefore, please make specific enquiries to ensure that our descriptions match your expectations of the property. Floor plan measurements are approximate and for illustrative purposes only. Furthermore, we have not tested any services, systems or appliances at this property. And we strongly recommend that you verify all the provided information on inspection and that your surveyor and conveyancer further confirm details. Also, market conditions and property values regularly fluctuate. And showcased sold properties demonstrate our previous successes rather than indicate live property values. *As advised by the owner. **Property sold subject to contract.



ALEX NEIL

ESTATE AGENTS SINCE 1984

2024 signifies our **40th Anniversary**, and we are immensely proud to have reached this impressive longevity milestone. In celebration, we launched an **exceptional promotion** for sellers, affording them increased marketing exposure for free!

40 years of expertise: With four decades of experience, we bring a wealth of knowledge and expertise. Our durability is a testament to the trust satisfied clients place in us. We understand the nuances of the diverse neighbourhoods we cover. Our local expertise allows us to provide tailored solutions, whether you're buying or selling, allowing you to move with confidence.



ALEX NEIL

ESTATE AGENTS SINCE 1984

www.alexneil.com